

Saving HUD Multifamily Homes: How to Use the National Housing Preservation Database (NHPD)



Preserving HUD Multifamily Subsidized Housing

Overview | Agenda and Presenters

Agenda

- Welcome
- Creating a Preservation Plan
- About the NHPD
- Using the NHPD
- Questions

Presenters



Dan Emmanuel— National Low Income Housing Coalition

Senior Research Analyst
dan@nlihc.org



Kelly McElwain— Public and Affordable Housing Research Corporation

Research Analyst III
kmcElwain@housingcenter.com



Bridgett Simmons— National Housing Law Project

Staff Attorney
bsimmons@nhlp.org

Preserving HUD Multifamily Subsidized Housing

Preservation | Saving HUD Multifamily Homes Webinar

Webinar Series: Saving HUD Multifamily Homes: 30-Minute Trainings for Tenant Advocates on Key Preservation Risks and Strategies

WEBINARS / MARCH 9, 2018

Tags: HUD Multifamily Housing Programs, HUD Preservation



Description:

The presence of affordable homes nationwide is rapidly decreasing. Throughout the U.S., there are 11.5 million extremely low-income tenants competing for a dwindling stock of 3.2 million affordable homes. For every new affordable home created, two are lost due to deterioration, abandonment, or conversion to more expensive housing. It is also far more cost-effective to rehabilitate existing housing than to construct new housing, and in recent years, Congress has allocated very little funding to build new affordable housing. Thus, the preservation of existing affordable homes is critically important for low-income tenants, since it directly impacts their housing stability, access to employment opportunities, health care, transportation, and education, among other important issues.

The structure of federally supported affordable housing multifamily properties creates unique long-term affordability risks because they are privately owned by for-profit and nonprofit owners. These include homes created with federally subsidized mortgages and with project-based rental assistance contracts. Data from the [National Housing Preservation Database](#) shows that nearly 1-in-10 publicly supported rental homes are subject to expiring affordability restrictions in the next 5 years.

Green Book Bookstore

Webinars

NHLP Publications

Housing Justice Network

E-Bulletin Digital Library

Toolkits

Guidebooks

Reports

30-minute Web Series

- Episode 1– Overview of HUD Multifamily Housing
- Episode 2– Understanding PBRA
- Episode 3– Understanding HAP Contract Renewals, Terminations, and opt-outs
- Episode 4-- Understanding Mortgage Prepayments and Maturities
- Episode 5– Condition Requirements
- Episode 6– Recapitalizing the Property

Importance of Preservation



NATIONAL
HOUSING LAW
PROJECT

Preserving HUD Multifamily Subsidized Housing

Preservation | Creating a Preservation Plan

What is a Preservation Plan?

A coordinated effort to preserve the long-term affordability of housing, the supply of affordable housing, and the quality of affordable housing.

- A plan can be developed for a single property or for an entire community
- A well developed preservation plan should always be informed by the residents of the affordable housing

Preserving HUD Multifamily Subsidized Housing

Preservation | Creating a Preservation Plan

Preservation of What?

- Affordability (Quantity)
- Physical Conditions (Quality)

Why Preservation?

- [Limited resources for the development of new affordable housing](#)
- The Importance of Community
- Enforcement of Tenant Protections
- [To Preserve Affordable Housing in the United States: A Policy History by Alexander von Hoffman](#)

Preserving HUD Multifamily Subsidized Housing

Preservation | Creating a Preservation Plan

Step 6: Identify and Build Relationships with Local Allies

Step 5: Pick a Strategy

Step 4: Deeper Research

Step 3: What is the scope of the plan?

Step 2: What is the objective of the preservation plan?

Step 1: Preliminary Research

Tools to Use



NATIONAL
HOUSING LAW
PROJECT

Preserving HUD Multifamily Subsidized Housing

Preservation | Resources

Research Resources

- [HUD Regional Offices](#)
- [NHLP Website](#)
- [NHLP--Green Book](#)
- [NLIHC-- Housing Needs by State](#)
- [NLIHC-- Advocates' Guide](#)
- [PAHRC-- Housing Impact Report](#)
- [NHPD-- Preservation Profiles](#)
- [National Housing Preservation Database](#)

Strategy Resources

- [NHLP-- HUD Preservation Webinars](#)
- [NHLP-- Challenging Conversions of Federally Assisted Housing \(*updates forthcoming*\)](#)
- [NHLP-- Restructuring Guide \(*updates forthcoming*\)](#)
- [NHPD-- Preservation Resources](#)

About the National Housing Preservation Database



NATIONAL
HOUSING LAW
PROJECT

History

About the NHPD

- National call for data
- PAHRC - NLIHC collaboration
- NHPD created in 2012
- Ongoing network of advisors
- Redesign in 2017

NHPD Mission: *To provide communities with the information they need to effectively preserve their stock of public and affordable housing.*

Programs Included

About the NHPD

Included Programs	Excluded Programs
<ul style="list-style-type: none">● Section 8 project-based rental assistance● Section 202 direct loans● State HFA funded section 236● Low income housing tax credits (LIHTC)● HOME● Public housing● HUD insured mortgages (affordable only)● USDA Section 538● USDA Section 515● USDA Section 514● State-funded programs for MA, CT, and FL	<ul style="list-style-type: none">● State and locally funded programs● Project-based vouchers● McKinney Vento Permanent Housing● HOPWA● Tax-exempt multifamily housing bonds● Section 516 Farm Labor Housing● Community Development Block Grants (CDBG)

Data Included

About the NHPD

Property Name	Subsidy Name
<ul style="list-style-type: none">● Property street address● Geographic characteristics● Unit count● Property owner and type● Active/inactive subsidies● Subsidy end date(s)● Subsidy start date● REAC score/date● Target tenant type● Occupancy rate● Bedroom unit mix	<ul style="list-style-type: none">● Subsidy ID● Program name● Manager name and type● Owner name and type● Start/end dates● Unpaid principal balance● Rent to FMR ratio● Subsidy status

What Does it Mean to be At Risk?

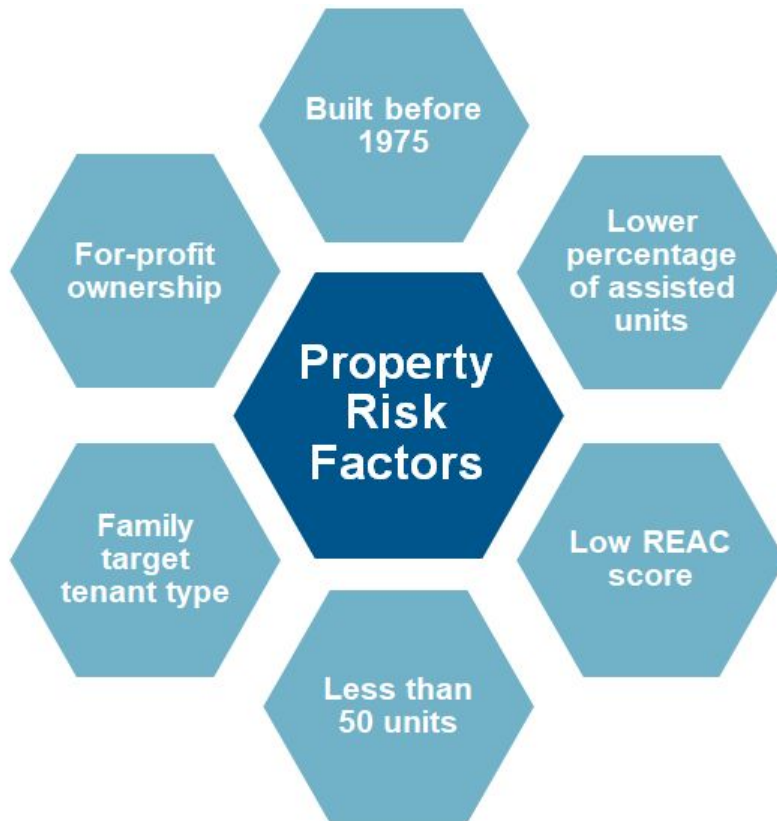
About the NHPD

- Inadequate funding to address capital needs
 - Failed inspections and/or loss of habitability
- Affordability restrictions ending
 - Conversion to market-rate or other use



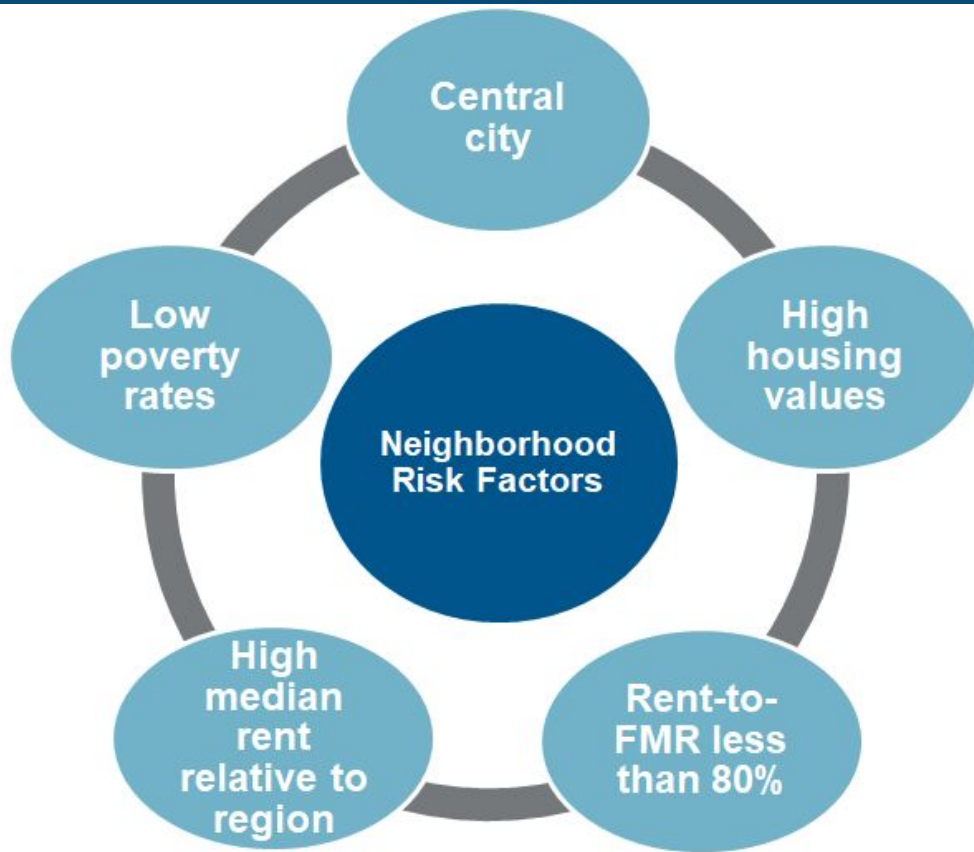
Property Risk Factors in NHPD

About the NHPD



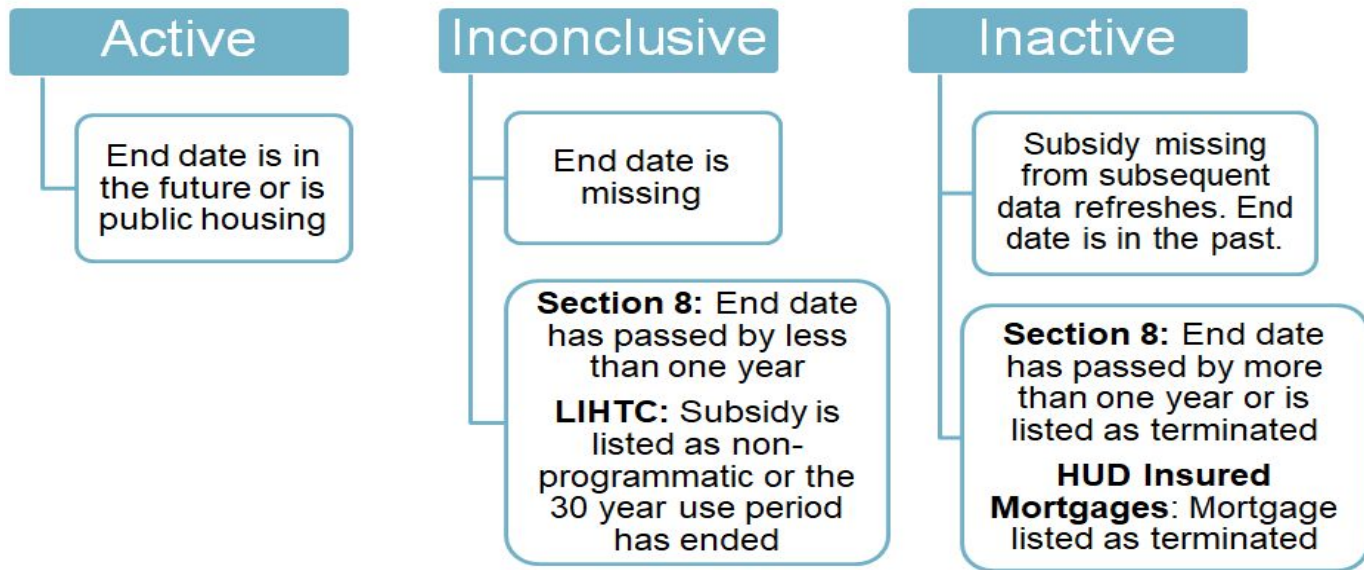
Neighborhood Risk Factors

About the NHPD



Subsidy Status

About the NHPD



Common NHPD Uses

About the NHPD



Locate subsidized properties



Estimate properties at risk of losing one or more subsidies



Inform preservation strategies



Identify tenant and owner rights



Create a local preservation database



Locate properties lost from affordable housing inventory



Estimate de-duplicated amount of federally subsidized rental housing

Using the NHPD



NATIONAL
HOUSING LAW
PROJECT

NHPD Resources

Using the NHPD | Introduction



Preservation Profiles



Mapping Tool



Database



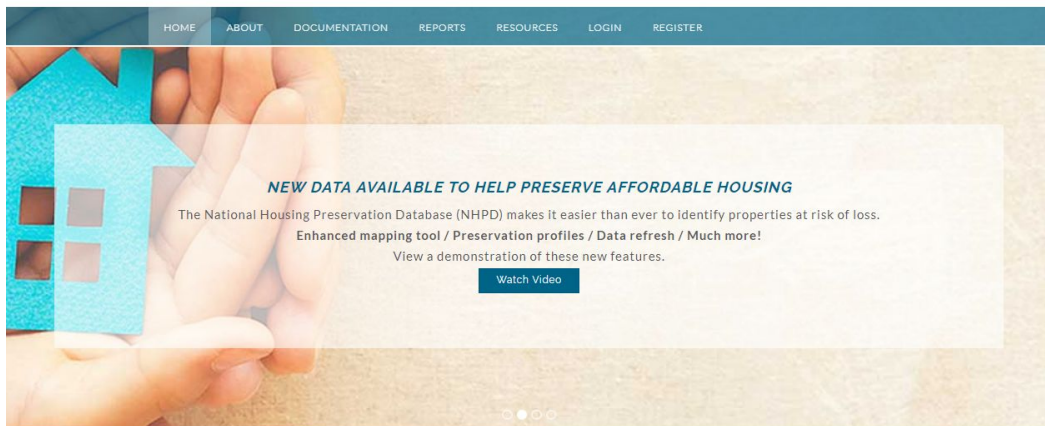
Downloads

Accessing Preservation Profiles

Using the NHPD | Preservation Profiles

www.preservationdatabase.org

National Housing Preservation Database (NHPD)



HOME ABOUT DOCUMENTATION REPORTS RESOURCES LOGIN REGISTER

NEW DATA AVAILABLE TO HELP PRESERVE AFFORDABLE HOUSING

The National Housing Preservation Database (NHPD) makes it easier than ever to identify properties at risk of loss.

Enhanced mapping tool / Preservation profiles / Data refresh / Much more!

View a demonstration of these new features.

[Watch Video](#)



Reports

View annual reports on the aggregate number of affordable housing properties and units by state and county.

[Read more](#)



Database

Access the database and customize your search of affordable housing properties by location, funding stream, or subsidy end date to support affordable housing preservation efforts.

[Register here](#)



Mapping Tool

Access interactive maps to view where affordable housing is located in your community, identify new affordable properties, and locate properties that are at risk of loss.

[See more](#)



Contribute

Increase the preservation of affordable housing by supporting this important resource for data-driven preservation strategies.

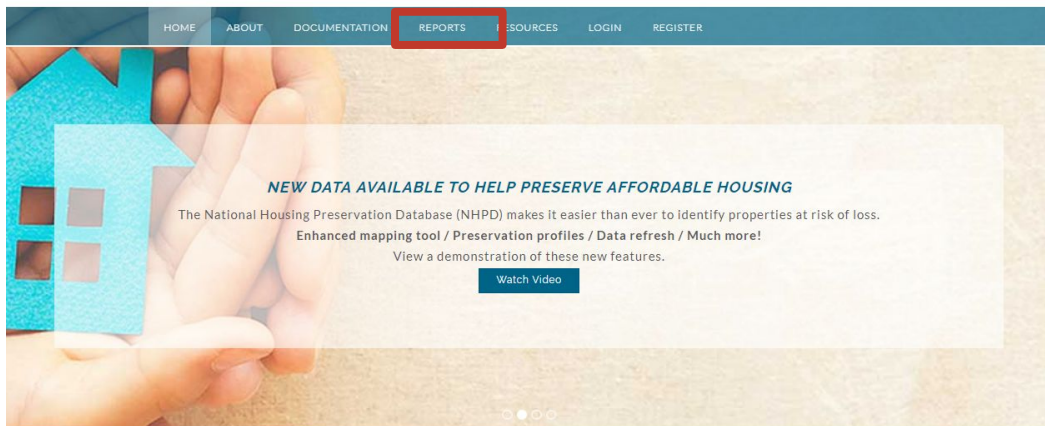
[Read more](#)

Accessing Preservation Profiles

Using the NHPD | Preservation Profiles

www.preservationdatabase.org

National Housing Preservation Database (NHPD)



HOME ABOUT DOCUMENTATION **REPORTS** SOURCES LOGIN REGISTER

NEW DATA AVAILABLE TO HELP PRESERVE AFFORDABLE HOUSING

The National Housing Preservation Database (NHPD) makes it easier than ever to identify properties at risk of loss.

Enhanced mapping tool / Preservation profiles / Data refresh / Much more!

View a demonstration of these new features.

[Watch Video](#)



Reports

View annual reports on the aggregate number of affordable housing properties and units by state and county.

[Read more](#)



Database

Access the database and customize your search of affordable housing properties by location, funding stream, or subsidy end date to support affordable housing preservation efforts.

[Register here](#)



Mapping Tool

Access interactive maps to view where affordable housing is located in your community, identify new affordable properties, and locate properties that are at risk of loss.

[See more](#)



Contribute

Increase the preservation of affordable housing by supporting this important resource for data-driven preservation strategies.

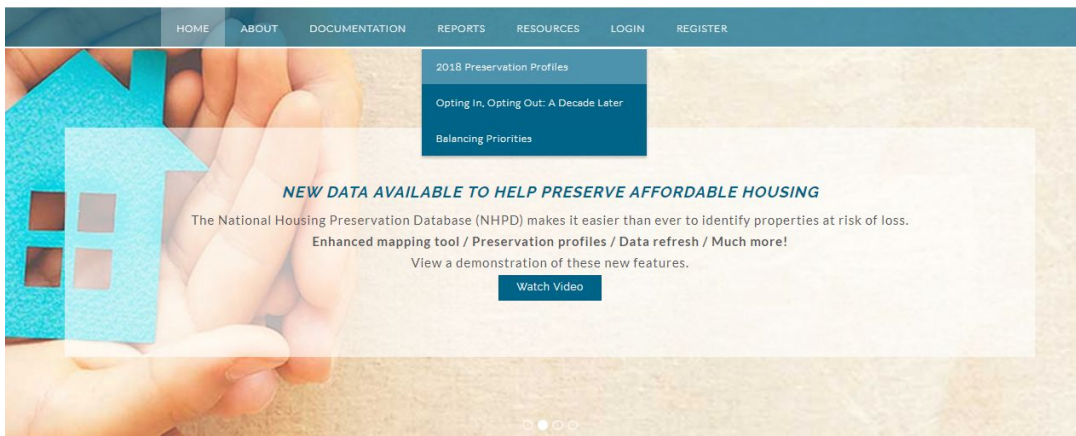
[Read more](#)

Accessing Preservation Profiles

Using the NHPD | Preservation Profiles

www.preservationdatabase.org

National Housing Preservation Database (NHPD)



Reports

View annual reports on the aggregate number of affordable housing properties and units by state and county.

[Read more](#)



Database

Access the database and customize your search of affordable housing properties by location, funding stream, or subsidy end date to support affordable housing preservation efforts.

[Register here](#)



Mapping Tool

Access interactive maps to view where affordable housing is located in your community, identify new affordable properties, and locate properties that are at risk of loss.

[See more](#)



Contribute

Increase the preservation of affordable housing by supporting this important resource for data-driven preservation strategies.

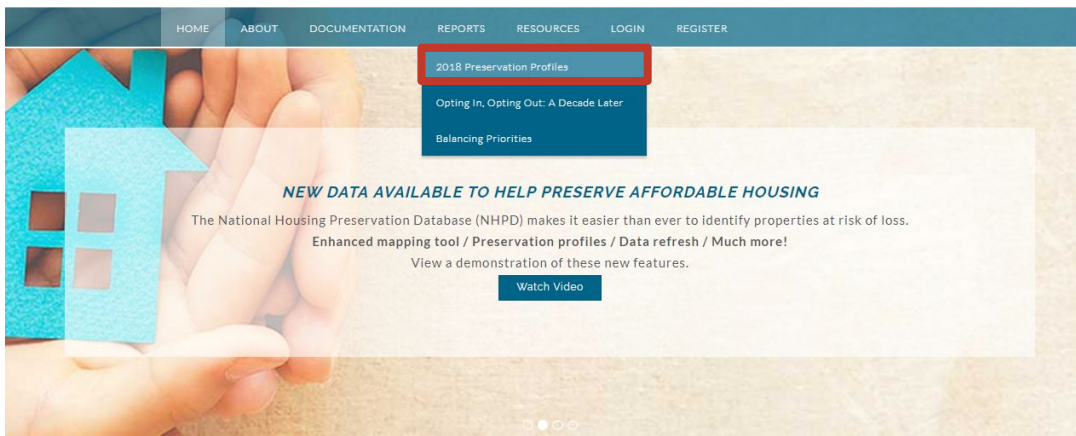
[Read more](#)

Accessing Preservation Profiles

Using the NHPD | Preservation Profiles

www.preservationdatabase.org

National Housing Preservation Database (NHPD)



Reports

View annual reports on the aggregate number of affordable housing properties and units by state and county.

[Read more](#)



Database

Access the database and customize your search of affordable housing properties by location, funding stream, or subsidy end date to support affordable housing preservation efforts.

[Register here](#)



Mapping Tool

Access interactive maps to view where affordable housing is located in your community, identify new affordable properties, and locate properties that are at risk of loss.

[See more](#)



Contribute

Increase the preservation of affordable housing by supporting this important resource for data-driven preservation strategies.

[Read more](#)

Preservation Profiles

Using the NHPD | Preservation Profiles



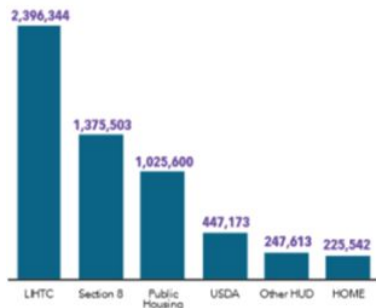
2018 PRESERVATION PROFILE



UNITED STATES

HUD and USDA programs play an important role in providing affordable homes to extremely low-income (ELI) families across the state. Many of the publicly supported homes, however, face expiring rent restrictions and are at risk of becoming unaffordable to the state's lowest income families.

NUMBER OF PUBLICLY SUPPORTED RENTAL HOMES BY PROGRAM

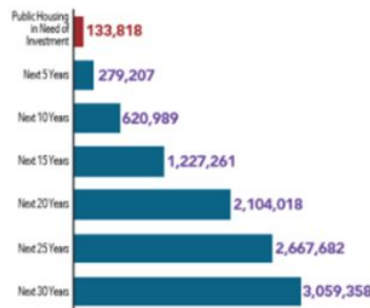


Nearly half of publicly supported rental homes across the state receive Low Income Housing Tax Credits.

*Other includes Section 236 HUD Insured Mortgages, Section 202 Direct Loans, and State Section 236.

Note: Rental units can be supported by multiple programs.

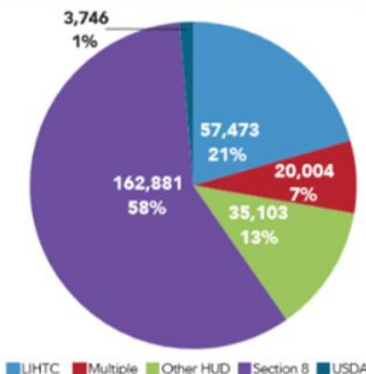
PUBLICLY SUPPORTED RENTAL HOMES AT RISK OF LOSS



More than one-in-twenty publicly supported rental homes face an expiring affordability restriction in the next five years and 133,818 public housing units are in need of immediate investment*.

* Indicated by a REAC score less than 80.

PUBLICLY SUPPORTED RENTAL HOMES WITH EXPIRING AFFORDABILITY RESTRICTIONS WITHIN FIVE YEARS BY FUNDING STREAM



Over half of publicly supported rental homes with expiring affordability restrictions in the next five years are assisted by Section 8 contracts.

KEY FACTS

7,259,940

Shortage of rental homes affordable and available for ELI renters

7,991,168

ELI households spending more than half of their income on rent

4,904,674

Number of publicly supported rental homes

279,207

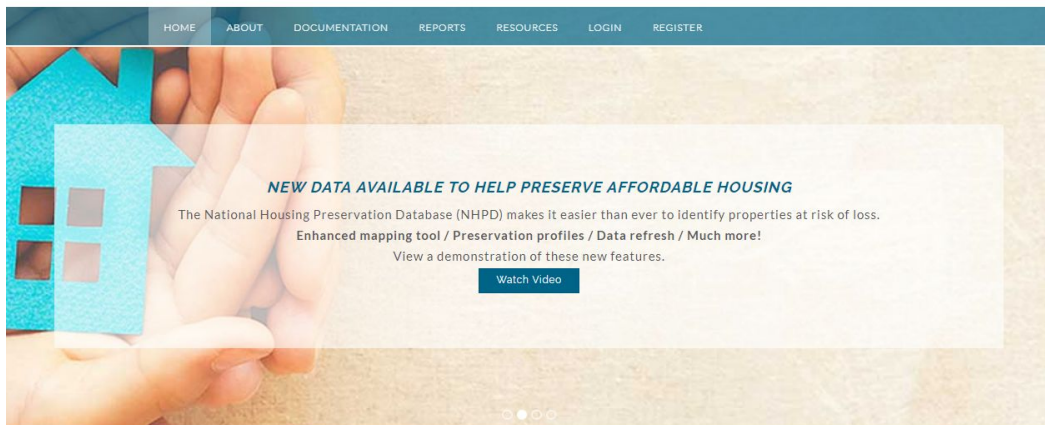
Number of publicly supported rental homes with affordability restrictions expiring in next five years

Accessing the Mapping Tool

Using the NHPD | Mapping Tool

www.preservationdatabase.org

National Housing Preservation Database (NHPD)



HOME ABOUT DOCUMENTATION REPORTS RESOURCES LOGIN REGISTER

NEW DATA AVAILABLE TO HELP PRESERVE AFFORDABLE HOUSING

The National Housing Preservation Database (NHPD) makes it easier than ever to identify properties at risk of loss.

Enhanced mapping tool / Preservation profiles / Data refresh / Much more!

View a demonstration of these new features.

[Watch Video](#)



Reports

View annual reports on the aggregate number of affordable housing properties and units by state and county.

[Read more](#)



Database

Access the database and customize your search of affordable housing properties by location, funding stream, or subsidy end date to support affordable housing preservation efforts.

[Register here](#)



Mapping Tool

Access interactive maps to view where affordable housing is located in your community, identify new affordable properties, and locate properties that are at risk of loss.

[See more](#)



Contribute

Increase the preservation of affordable housing by supporting this important resource for data-driven preservation strategies.

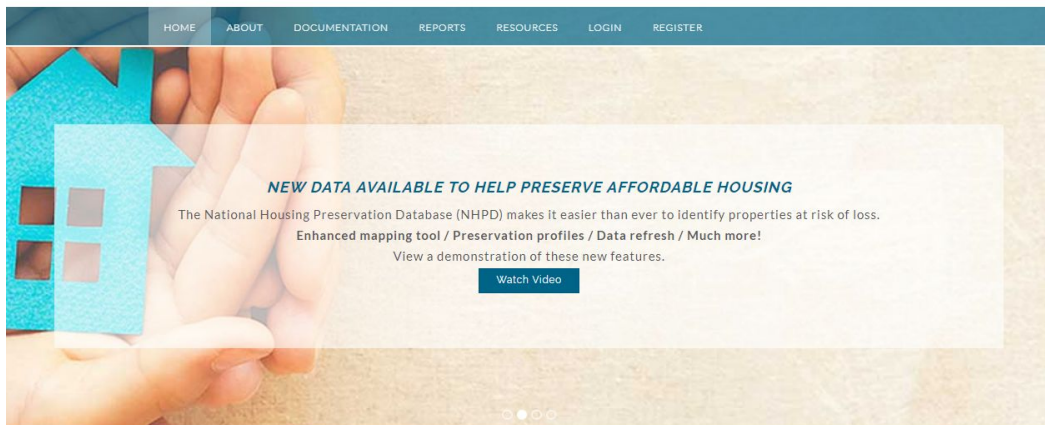
[Read more](#)

Accessing the Mapping Tool

Using the NHPD | Mapping Tool

www.preservationdatabase.org

National Housing Preservation Database (NHPD)



Reports

View annual reports on the aggregate number of affordable housing properties and units by state and county.

[Read more](#)



Database

Access the database and customize your search of affordable housing properties by location, funding stream, or subsidy end date to support affordable housing preservation efforts.

[Register here](#)



Mapping Tool

Access interactive maps to view where affordable housing is located in your community, identify new affordable properties, and locate properties that

[See more](#)



Contribute

Increase the preservation of affordable housing by supporting this important resource for data-driven preservation strategies.

[Read more](#)

Applying Filters

Using the NHPD | Mapping Tool

National Housing Preservation Database

Find address or place

Please apply filters below.

State
0 selected

County
0 selected

City
0 selected

Latest End Date is Before

Property Receives Low Income Housing Tax Credit
- empty -

Property Receives Section 8 Contract
- empty -

Property Receives HOME Subsidy
- empty -

Property Receives HUD Insured Mortgages
- empty -

Public housing Property
- empty -

Property Receives Section 515 Direct Loan
- empty -

Property Receives Section 538 Guaranteed Rural Rental Housing Assistance
- empty -

Applying Filters

Using the NHPD | Mapping Tool

National Housing Preservation Database

Find address or place

Please apply filters below.

State

0 selected

Search

☐ AK

☐ AL

☐ AR

☐ AZ

☐ CA

☐ CO

☐ CT

☐ DC

☐ DE

☐ FL

Property Receives HOME Subsidy

- empty -

Property Receives HUD Insured Mortgages

- empty -

Public housing Property

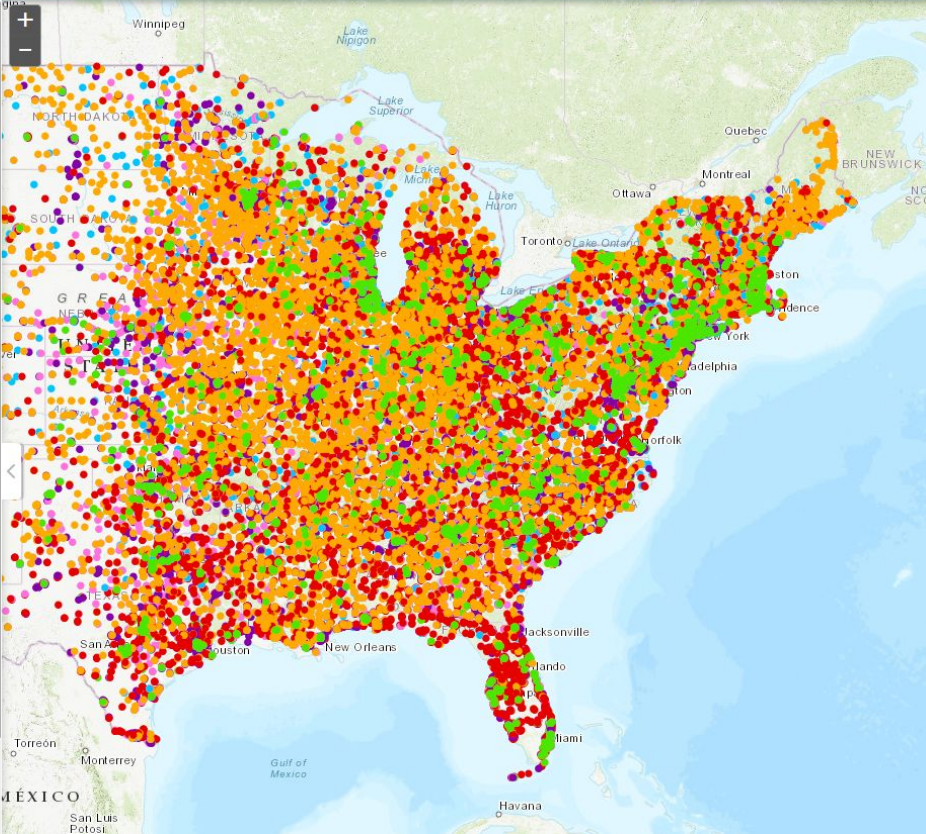
- empty -

Property Receives Section 515 Direct Loan

- empty -

Property Receives Section 538 Guaranteed Rural Rental Housing Assistance

- empty -



The map displays the United States with numerous colored dots representing property locations. The dots are concentrated in the eastern half of the country, particularly in the Northeast and Southeast. The colors of the dots vary, likely representing different categories or statuses of the properties. Major cities and geographical features are labeled on the map, including Winnipeg, Lake Superior, Lake Michigan, Lake Huron, Lake Erie, Lake Ontario, Toronto, Ottawa, Montreal, Quebec, New Brunswick, New York, Philadelphia, Washington, D.C., Boston, New Orleans, San Antonio, Houston, San Diego, San Jose, San Francisco, San Luis Potosi, Monterrey, Torreón, and Havana. The map also shows the Gulf of Mexico and the border with Mexico.

Applying Filters

Using the NHPD | Mapping Tool

National Housing Preservation Database

Find address or place

Please apply filters below.

State

1 selected

Search

☐ AK

☐ AL

☐ AR

☐ AZ

☐ CA

☐ CO

☒ CT

☐ DC

☐ DE

☐ FL

Property Receives HOME Subsidy

- empty -

Property Receives HUD Insured Mortgages

- empty -

Public housing Property

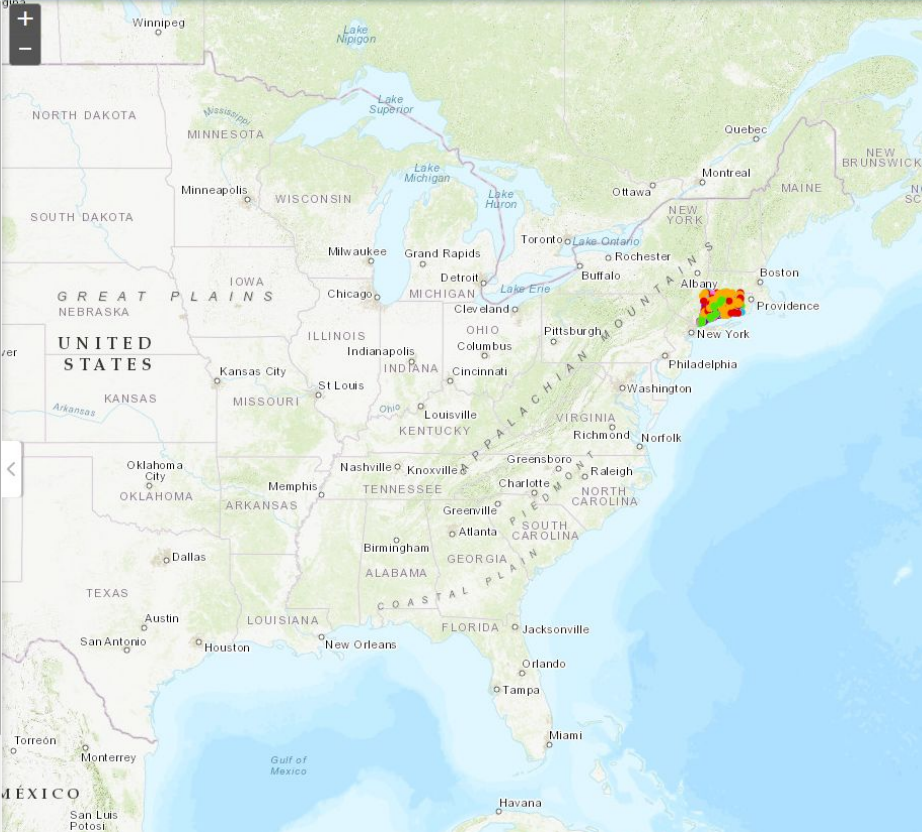
- empty -

Property Receives Section 515 Direct Loan

- empty -

Property Receives Section 538 Guaranteed Rural Rental Housing Assistance

- empty -



Zooming to Area of Interest

Using the NHPD | Mapping Tool

National Housing Preservation Database

Please apply filters below. ☒

State: 1 selected

County: 0 selected

City: 0 selected

Latest End Date is Before:

Property Receives Low Income Housing Tax Credit: - empty -

Property Receives Section 8 Contract: - empty -

Property Receives HOME Subsidy: - empty -

Property Receives HUD Insured Mortgages: - empty -

Public housing Property: - empty -

Property Receives Section 515 Direct Loan: - empty -

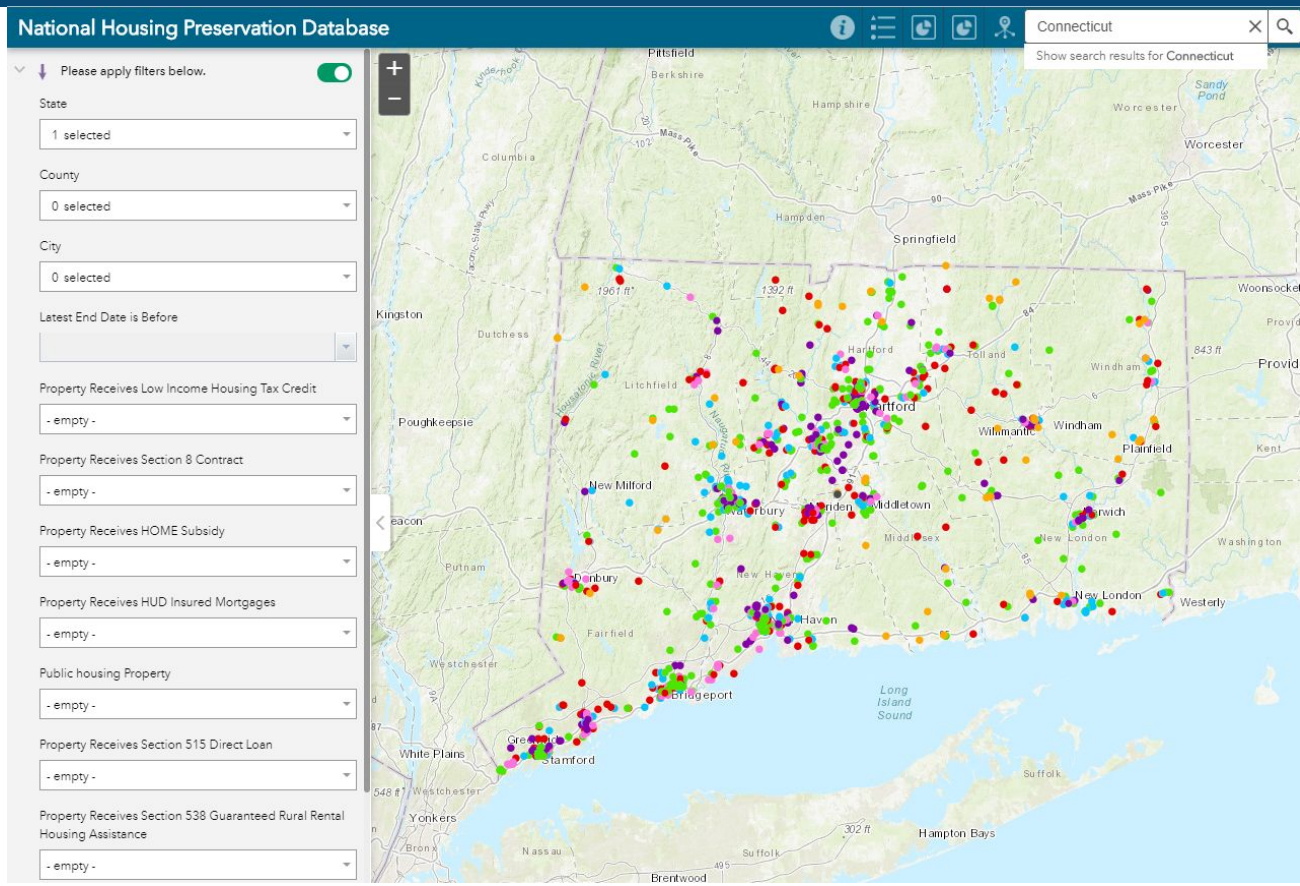
Property Receives Section 538 Guaranteed Rural Rental Housing Assistance: - empty -

Map of the United States showing state boundaries and major cities. A red box highlights the state of Connecticut, which is also highlighted in the search bar above the map.

Search bar: Connecticut

Zooming to Area of Interest

Using the NHPD | Mapping Tool



Applying Filters

Using the NHPD | Mapping Tool

National Housing Preservation Database

Please apply filters below. ☒

State: 1 selected

County: 0 selected

City: 0 selected

Latest End Date is Before:

Property Receives Low Income Housing Tax Credit: - empty -

Property Receives Section 8 Contract: - empty -

Property Receives HOME Subsidy: - empty -

Property Receives HUD Insured Mortgages: - empty -

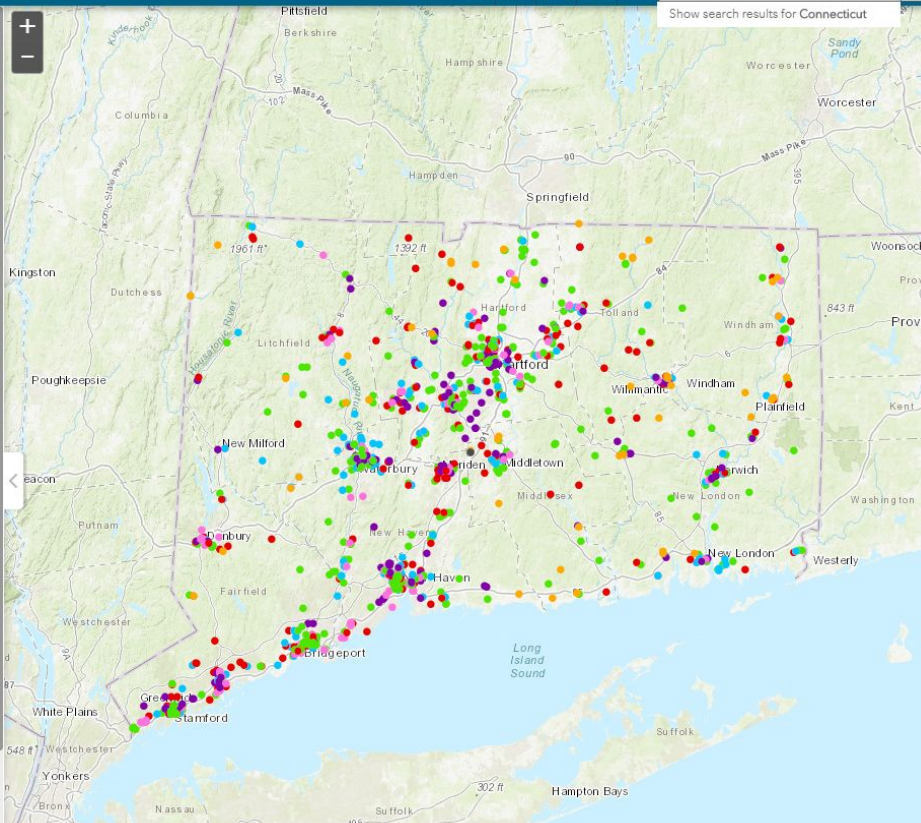
Public housing Property: - empty -

Property Receives Section 515 Direct Loan: - empty -

Property Receives Section 538 Guaranteed Rural Rental Housing Assistance: - empty -

Connecticut

Show search results for Connecticut



The map displays the state of Connecticut with numerous colored dots representing housing preservation locations. The dots are concentrated in the central and eastern parts of the state, particularly around the Hartford and Springfield areas. The map includes labels for major cities like Hartford, Springfield, and New Haven, as well as surrounding states like Massachusetts and New York. The map also shows major roads and geographical features like the Long Island Sound.

Applying Filters

Using the NHPD | Mapping Tool

National Housing Preservation Database

Please apply filters below. ☒

State: 1 selected

County: 0 selected

City: 0 selected

Latest End Date is Before: the date... today yesterday tomorrow - empty -

Property Receives HOME Subsidy: - empty -

Property Receives HUD Insured Mortgages: - empty -

Public housing Property: - empty -

Property Receives Section 515 Direct Loan: - empty -

Property Receives Section 538 Guaranteed Rural Rental Housing Assistance: - empty -

Connecticut

Show search results for Connecticut

The map displays the state of Connecticut with numerous colored dots representing housing preservation data points. The dots are concentrated in the central and eastern parts of the state, particularly around the Hartford and Springfield areas. The map includes labels for major cities like Hartford, Springfield, and New London, as well as surrounding states like Massachusetts and New York. The map also shows major roads and geographical features like the Long Island Sound.

Applying Filters

Using the NHPD | Mapping Tool

National Housing Preservation Database

Please apply filters below. ☒

State: 1 selected

County: 0 selected

City: 0 selected

Latest End Date is Before: the date...

Calendar: April 2023 2024 2025

Property Receives HUD Insured Mortgages: - empty -

Public housing Property: - empty -

Property Receives Section 515 Direct Loan: - empty -

Property Receives Section 538 Guaranteed Rural Rental Housing Assistance: - empty -

Connecticut

Show search results for Connecticut

The map displays the state of Connecticut with numerous colored dots representing housing preservation data points. The dots are concentrated in the central and eastern parts of the state, particularly around the Hartford and Springfield areas. The map includes labels for major cities like Hartford, Springfield, and New Haven, as well as surrounding states like Massachusetts and New York. The map also shows major roads and geographical features like the Long Island Sound.

Applying Filters

Using the NHPD | Mapping Tool

National Housing Preservation Database

Please apply filters below. ☒

State: 1 selected

County: 0 selected

City: 0 selected

Latest End Date is Before: the date...

Calendar: April 2023

S	M	T	W	T	F	S
31	1	2	3	4	5	6
7	8	9	10	11	12	13
14	15	16	17	18	19	20
21	22	23	24	25	26	27
28	29	30	1	2	3	4
5	6	7	8	9	10	11

2023 2024 2025

Property Receives HUD Insured Mortgages: - empty -

Public housing Property: - empty -

Property Receives Section 515 Direct Loan: - empty -

Property Receives Section 538 Guaranteed Rural Rental Housing Assistance: - empty -

Connecticut

Show search results for Connecticut

The map displays the state of Connecticut with numerous colored dots representing housing preservation data points. The dots are concentrated in the central and eastern parts of the state, particularly around the Hartford and Springfield areas. The map includes labels for major cities like Hartford, Springfield, and New Haven, as well as surrounding states like Massachusetts and New York. The map also shows major roads and geographical features like the Long Island Sound.

Viewing Selection

Using the NHPD | Mapping Tool

National Housing Preservation Database

Connecticut

Show search results for Connecticut

Please apply filters below.

State: 1 selected

County: 0 selected

City: 0 selected

Latest End Date is Before: 4/10/2024

Property Receives Low Income Housing Tax Credit: - empty -

Property Receives Section 8 Contract: - empty -

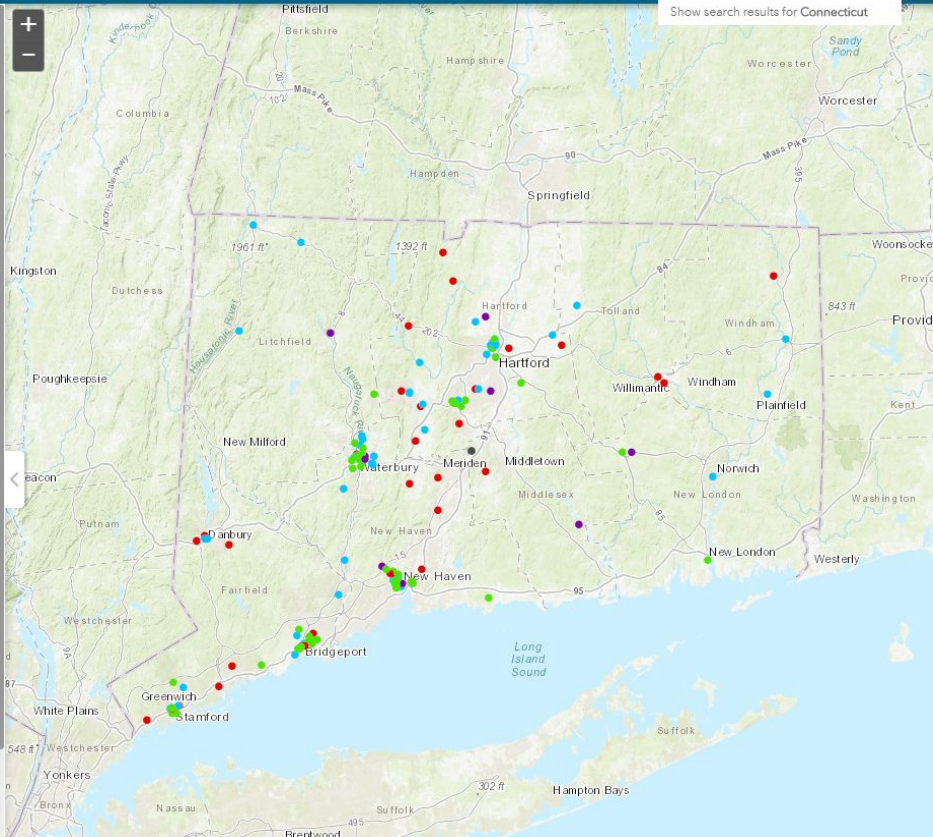
Property Receives HOME Subsidy: - empty -

Property Receives HUD Insured Mortgages: - empty -

Public housing Property: - empty -

Property Receives Section 515 Direct Loan: - empty -

Property Receives Section 538 Guaranteed Rural Rental Housing Assistance: - empty -



The map displays the state of Connecticut with various cities and towns labeled. Colored dots (red, blue, green, purple) are scattered across the map, indicating the locations of housing preservation projects. The dots are concentrated in the central and southern parts of the state, particularly around Hartford, Waterbury, and New Haven. The map also shows major roads, rivers, and the Long Island Sound to the south.

Viewing Selection

Using the NHPD | Mapping Tool

National Housing Preservation Database

Connecticut

Show search results for Connecticut

Please apply filters below.

State: 1 selected

County: 0 selected

City: 0 selected

Latest End Date is Before: 4/10/2024

Property Receives Low Income Housing Tax Credit: - empty -

Property Receives Section 8 Contract: - empty -

Property Receives HOME Subsidy: - empty -

Property Receives HUD Insured Mortgages: - empty -

Public housing Property: - empty -

Property Receives Section 515 Direct Loan: - empty -

Property Receives Section 538 Guaranteed Rural Rental Housing Assistance: - empty -

The map displays the state of Connecticut with various cities and towns labeled. Numerous colored dots (red, blue, green, purple) are scattered across the map, representing housing preservation locations. A red rectangular box is drawn around the area containing the cities of Middletown and Meriden. The map also shows major roads, water bodies like Long Island Sound, and surrounding states like Massachusetts and New York.

Viewing Selection

Using the NHPD | Mapping Tool

National Housing Preservation Database

Connecticut

Show search results for Connecticut

Please apply filters below.

State: 1 selected

County: 0 selected

City: 0 selected

Latest End Date is Before: 4/10/2024

Property Receives Low Income Housing Tax Credit: - empty -

Property Receives Section 8 Contract: - empty -

Property Receives HOME Subsidy: - empty -

Property Receives HUD Insured Mortgages: - empty -

Public housing Property: - empty -

Property Receives Section 515 Direct Loan: - empty -

Property Receives Section 538 Guaranteed Rural Rental Housing Assistance: - empty -

VILLAGE APARTMENTS

Property Name	VILLAGE APARTMENTS
Property Address	6 Evansville Ave
City	Meriden
State	CT
Zip Code	06451-5147
Total Units	22
Property Status	Active
Earliest Start Date	6/30/1982
Latest End Date	5/31/2022
Latitude	41.51877
Longitude	-72.83090
Manager Name	CARR PROPERTY MANAGEMENT
Zoom to	***

Viewing Selection

Using the NHPD | Mapping Tool

National Housing Preservation Database

Connecticut

Show search results for Connecticut

Please apply filters below.

State: 1 selected

County: 0 selected

City: 0 selected

Latest End Date is Before: 4/10/2024

Property Receives Low Income Housing Tax Credit: - empty -

Property Receives Section 8 Contract: - empty -

Property Receives HOME Subsidy: - empty -

Property Receives HUD Insured Mortgages: - empty -

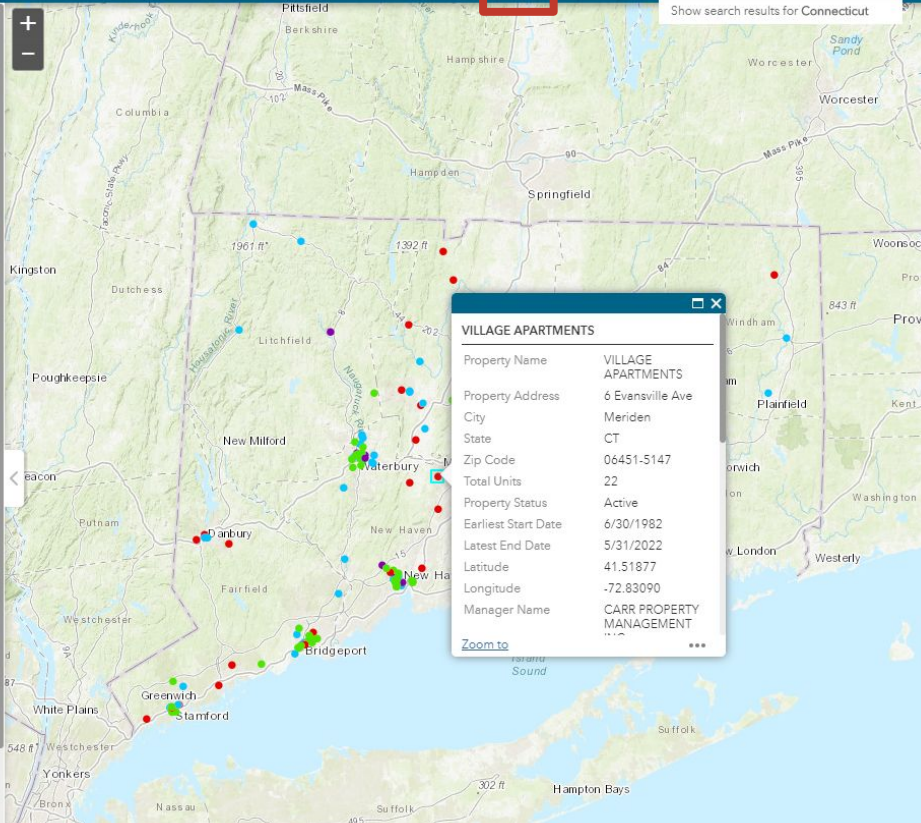
Public housing Property: - empty -

Property Receives Section 515 Direct Loan: - empty -

Property Receives Section 538 Guaranteed Rural Rental Housing Assistance: - empty -

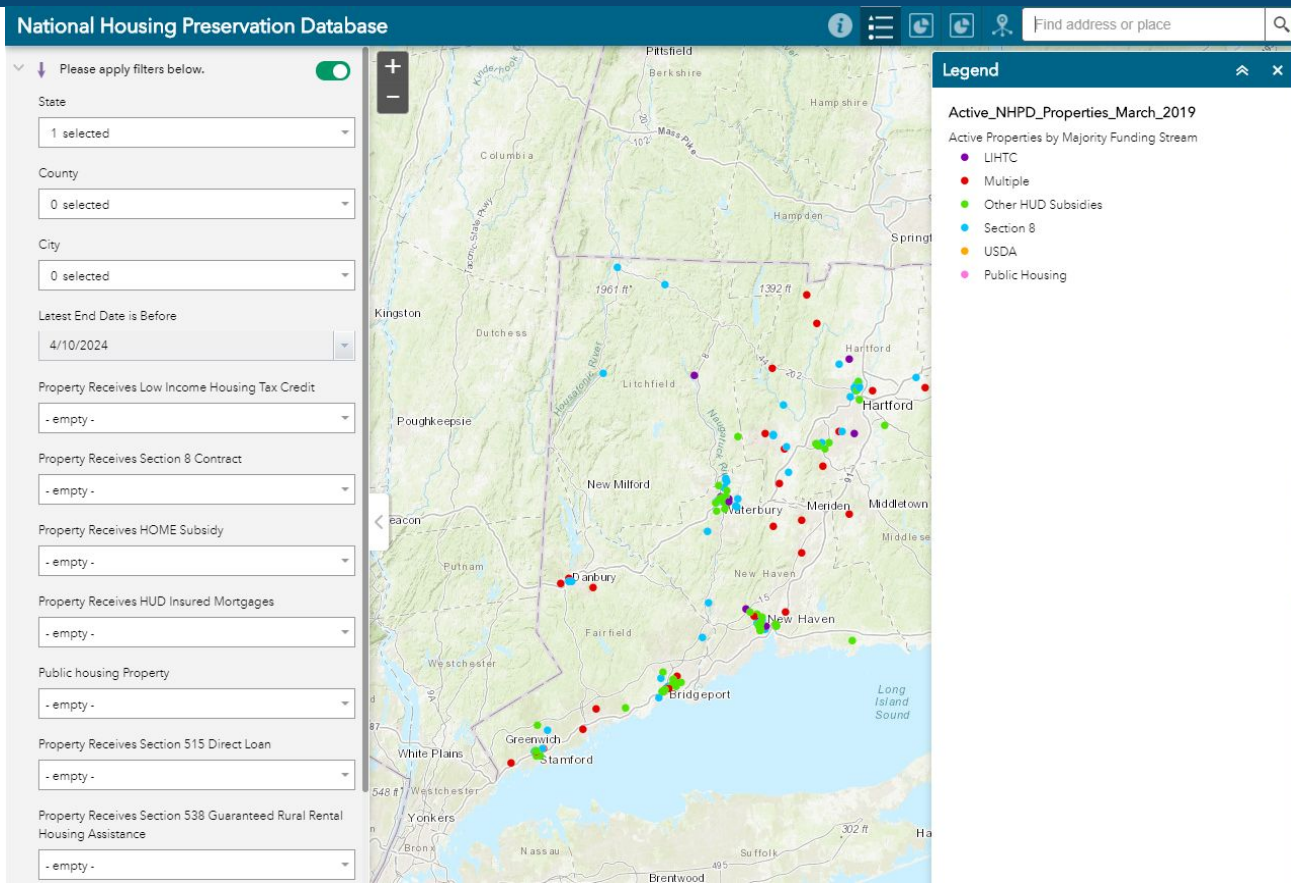
VILLAGE APARTMENTS

Property Name	VILLAGE APARTMENTS
Property Address	6 Evansville Ave
City	Meriden
State	CT
Zip Code	06451-5147
Total Units	22
Property Status	Active
Earliest Start Date	6/30/1982
Latest End Date	5/31/2022
Latitude	41.51877
Longitude	-72.83090
Manager Name	CARR PROPERTY MANAGEMENT
Zoom to	***



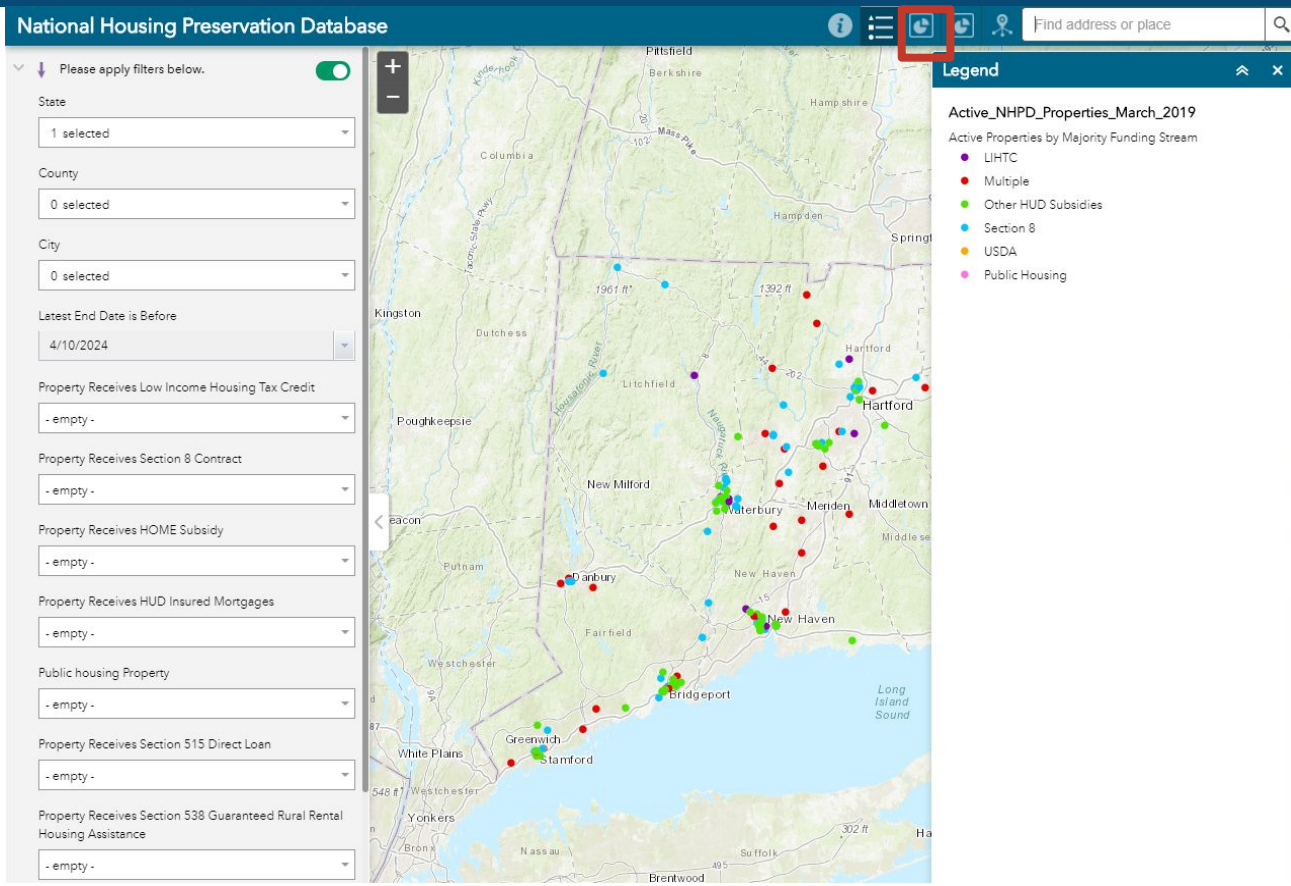
Viewing Infographics

Using the NHPD | Mapping Tool



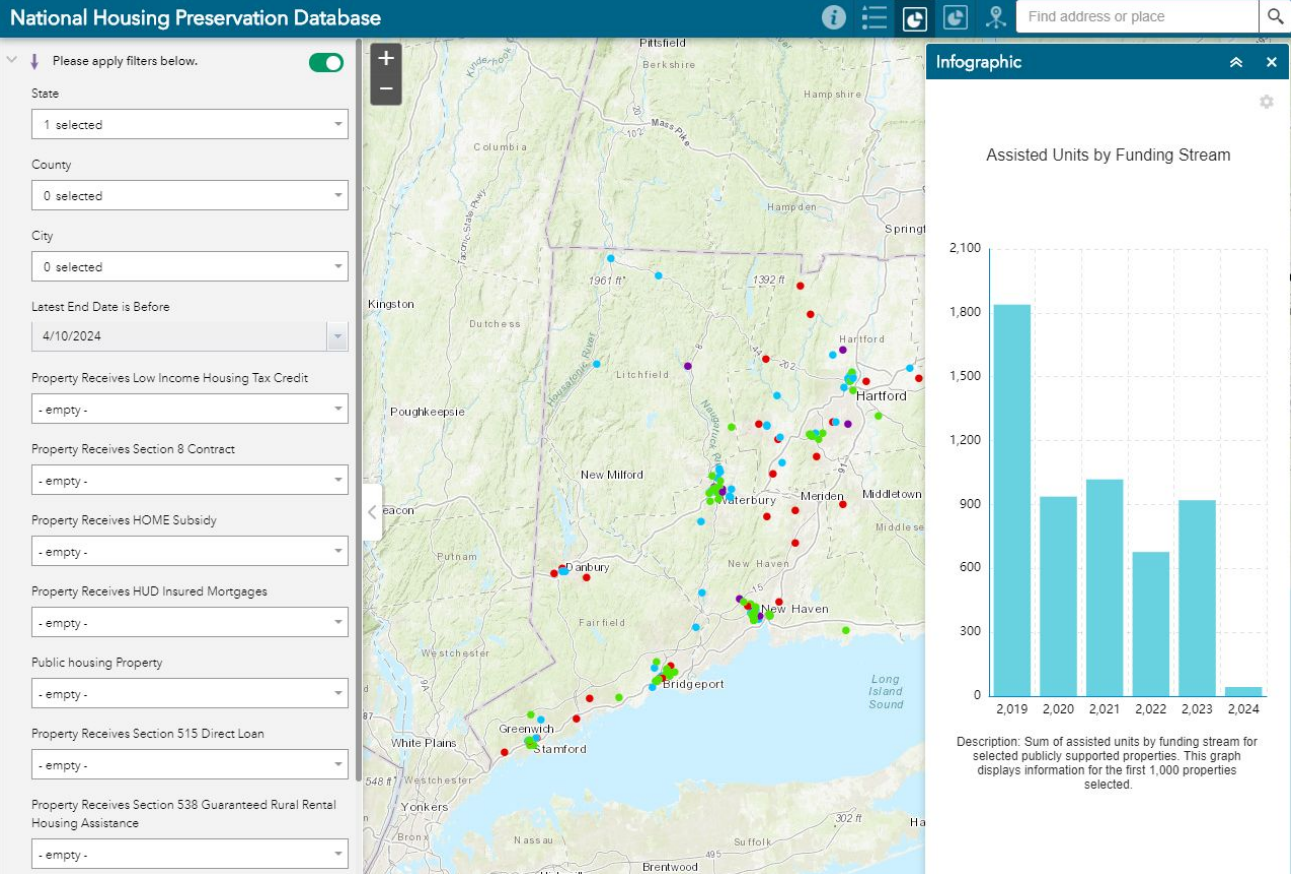
Viewing Infographics

Using the NHPD | Mapping Tool



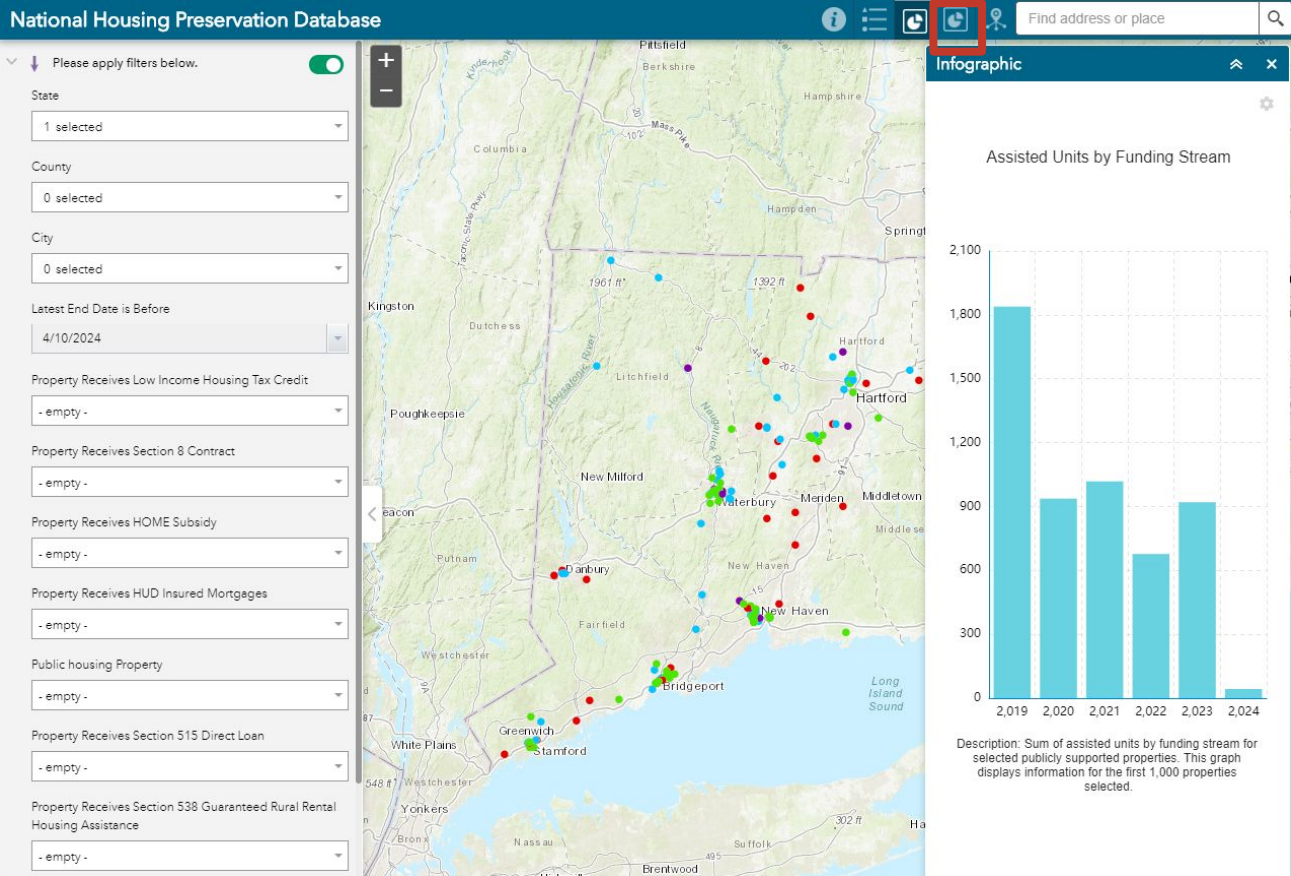
Viewing Infographics

Using the NHPD | Mapping Tool



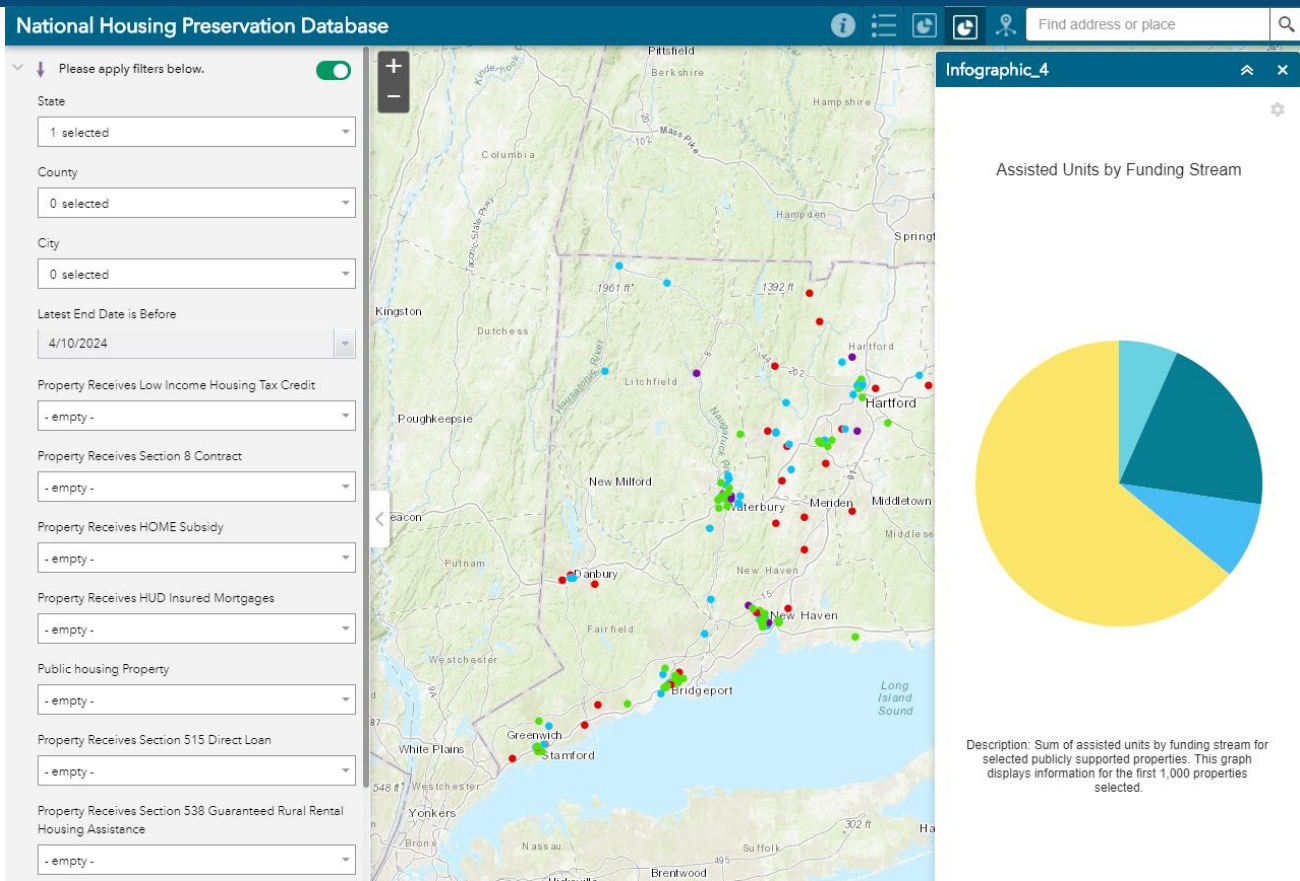
Viewing Infographics

Using the NHPD | Mapping Tool



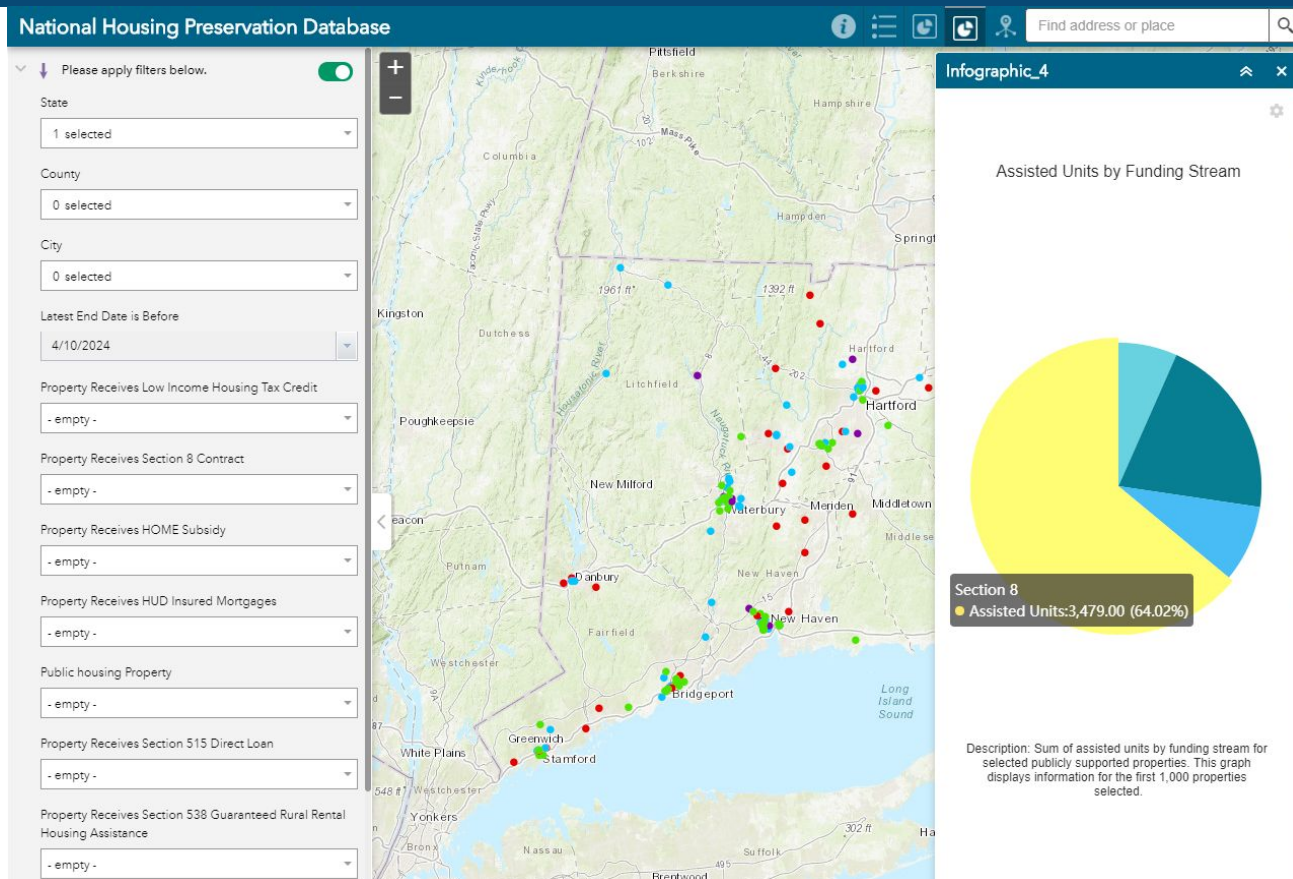
Viewing Infographics

Using the NHPD | Mapping Tool



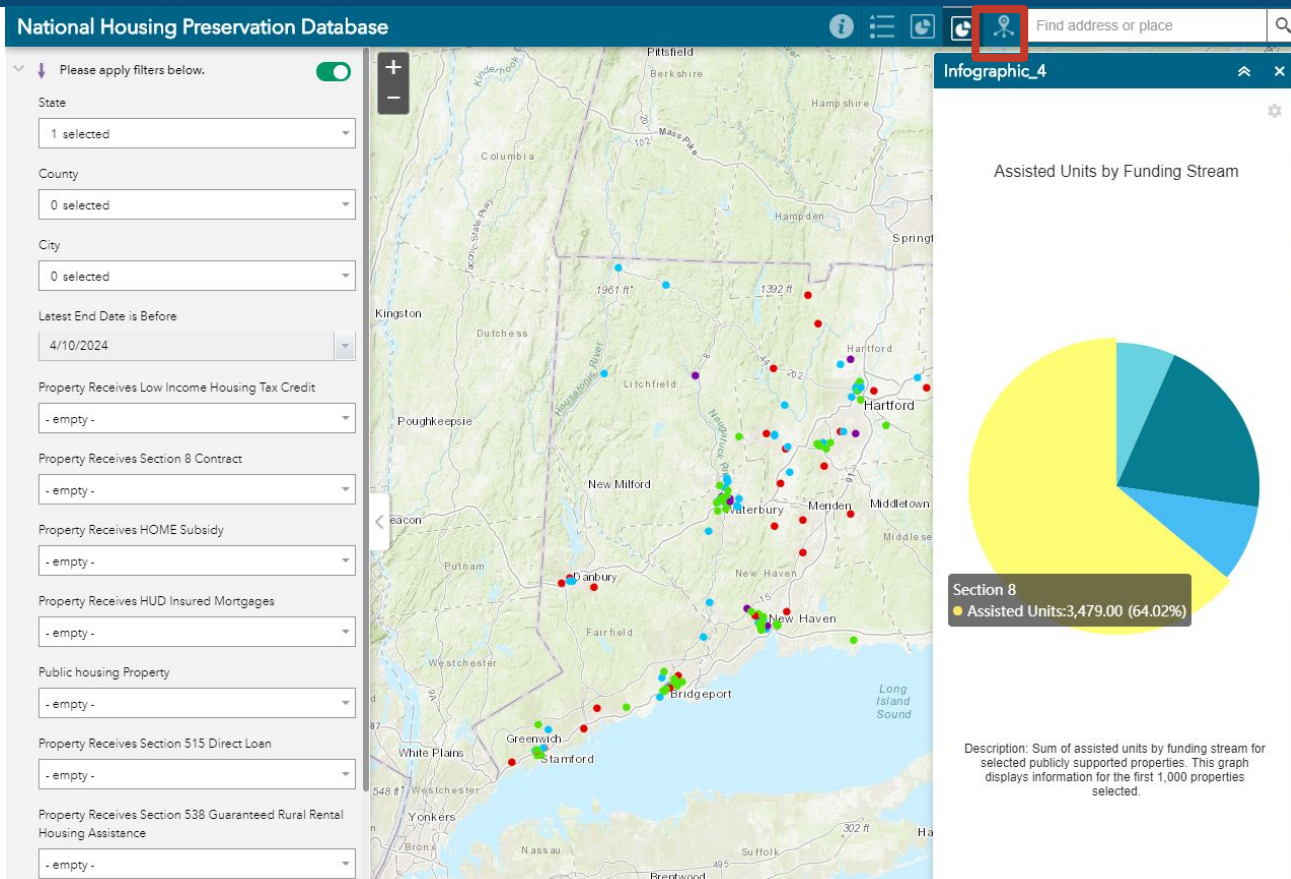
Viewing Infographics

Using the NHPD | Mapping Tool



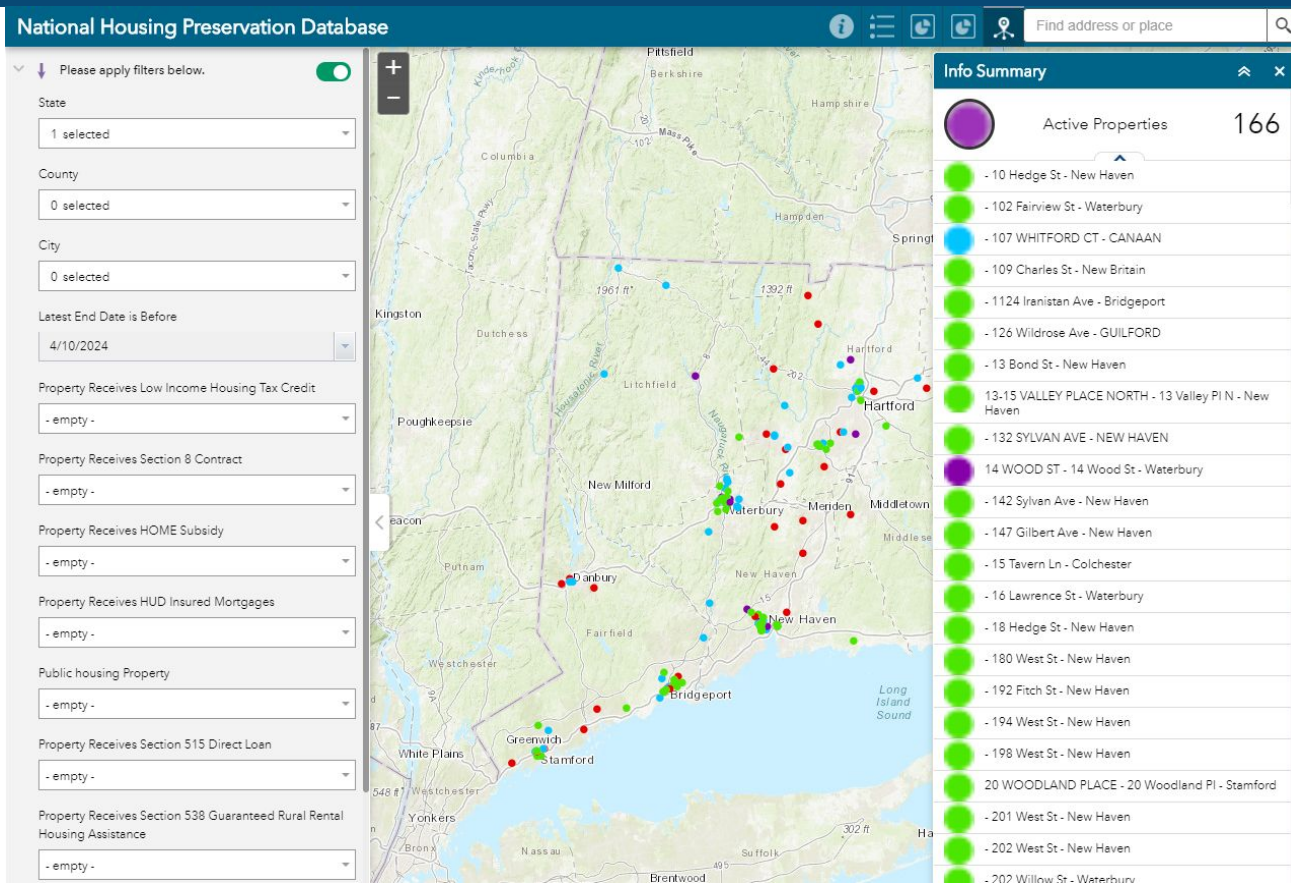
Viewing Infographics

Using the NHPD | Mapping Tool



Viewing Infographics

Using the NHPD | Mapping Tool

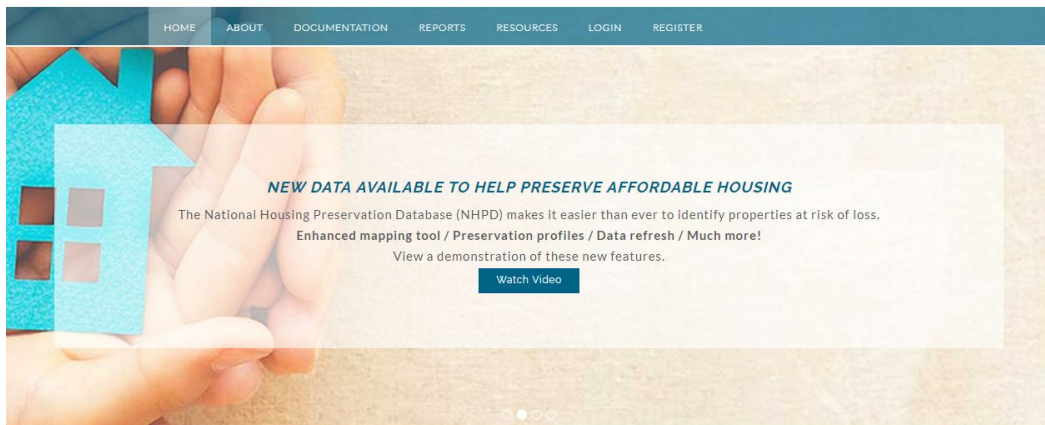


Locating Documentation

Using the NHPD | Database

www.preservationdatabase.org

National Housing Preservation Database (NHPD)



HOME ABOUT DOCUMENTATION REPORTS RESOURCES LOGIN REGISTER

NEW DATA AVAILABLE TO HELP PRESERVE AFFORDABLE HOUSING

The National Housing Preservation Database (NHPD) makes it easier than ever to identify properties at risk of loss.

Enhanced mapping tool / Preservation profiles / Data refresh / Much more!

View a demonstration of these new features.

[Watch Video](#)



Reports

View annual reports on the aggregate number of affordable housing properties and units by state and county.

[Read more](#)



Database

Access the database and customize your search of affordable housing properties by location, funding stream, or subsidy end date to support affordable housing preservation efforts.

[Register here](#)



Mapping Tool

Access interactive maps to view where affordable housing is located in your community, identify new affordable properties, and locate properties that are at risk of loss.

[See more](#)



Contribute

Increase the preservation of affordable housing by supporting this important resource for data-driven preservation strategies.

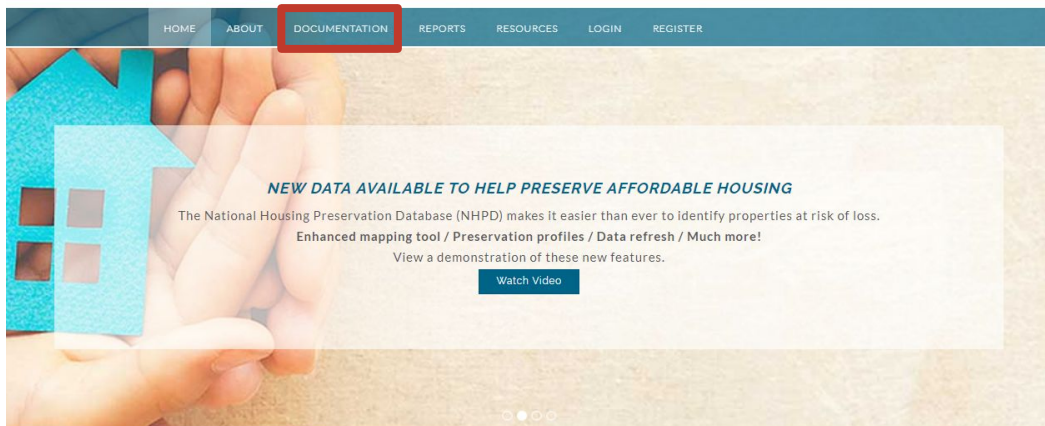
[Read more](#)

Locating Documentation

Using the NHPD | Database

www.preservationdatabase.org

National Housing Preservation Database (NHPD)



Reports

View annual reports on the aggregate number of affordable housing properties and units by state and county.

[Read more](#)



Database

Access the database and customize your search of affordable housing properties by location, funding stream, or subsidy end date to support affordable housing preservation efforts.

[Register here](#)



Mapping Tool

Access interactive maps to view where affordable housing is located in your community, identify new affordable properties, and locate properties that are at risk of loss.

[See more](#)



Contribute

Increase the preservation of affordable housing by supporting this important resource for data-driven preservation strategies.

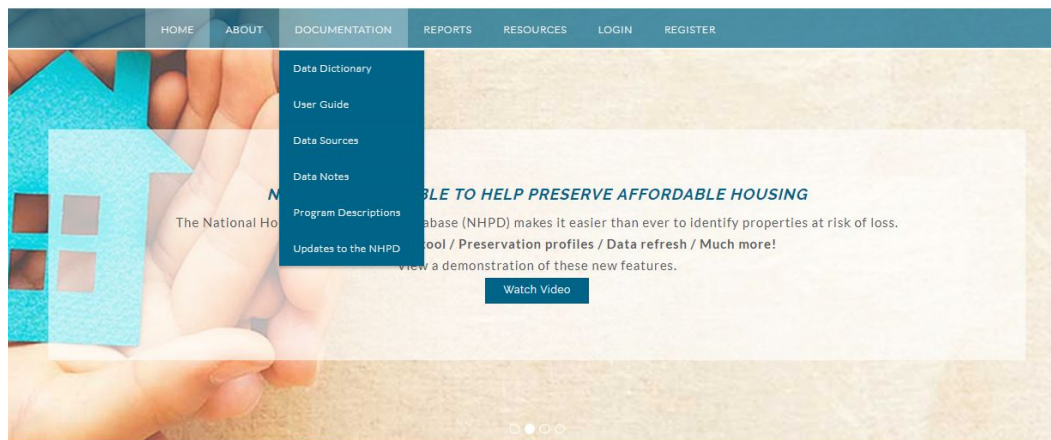
[Read more](#)

Locating Documentation

Using the NHPD | Database

www.preservationdatabase.org

National Housing Preservation Database (NHPD)



Reports

View annual reports on the aggregate number of affordable housing properties and units by state and county.

[Read more](#)



Database

Access the database and customize your search of affordable housing properties by location, funding stream, or subsidy end date to support affordable housing preservation efforts.

[Register here](#)



Mapping Tool

Access interactive maps to view where affordable housing is located in your community, identify new affordable properties, and locate properties that are at risk of loss.

[See more](#)



Contribute

Increase the preservation of affordable housing by supporting this important resource for data-driven preservation strategies.

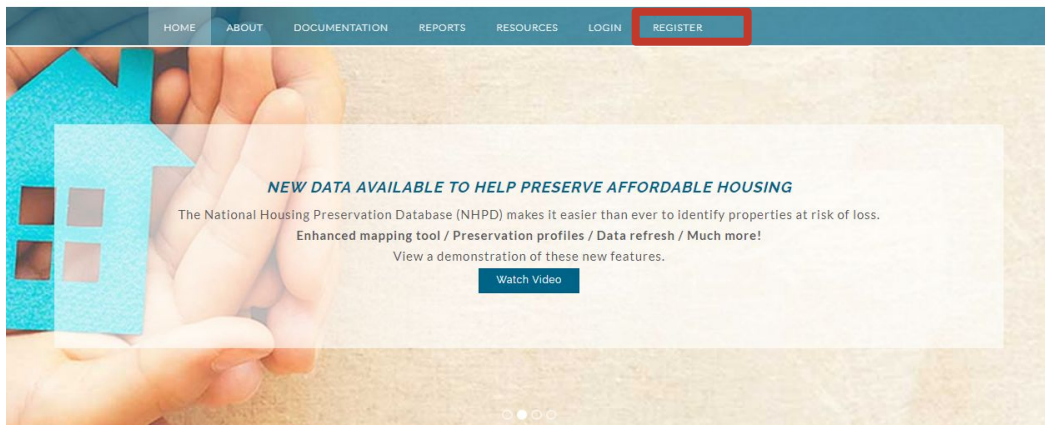
[Read more](#)

Locating Database

Using the NHPD | Database

www.preservationdatabase.org

National Housing Preservation Database (NHPD)



HOME ABOUT DOCUMENTATION REPORTS RESOURCES LOGIN REGISTER

NEW DATA AVAILABLE TO HELP PRESERVE AFFORDABLE HOUSING

The National Housing Preservation Database (NHPD) makes it easier than ever to identify properties at risk of loss.

Enhanced mapping tool / Preservation profiles / Data refresh / Much more!

View a demonstration of these new features.

[Watch Video](#)



Reports

View annual reports on the aggregate number of affordable housing properties and units by state and county.

[Read more](#)



Database

Access the database and customize your search of affordable housing properties by location, funding stream, or subsidy end date to support affordable housing preservation efforts.

[Register here](#)



Mapping Tool

Access interactive maps to view where affordable housing is located in your community, identify new affordable properties, and locate properties that are at risk of loss.

[See more](#)



Contribute

Increase the preservation of affordable housing by supporting this important resource for data-driven preservation strategies.

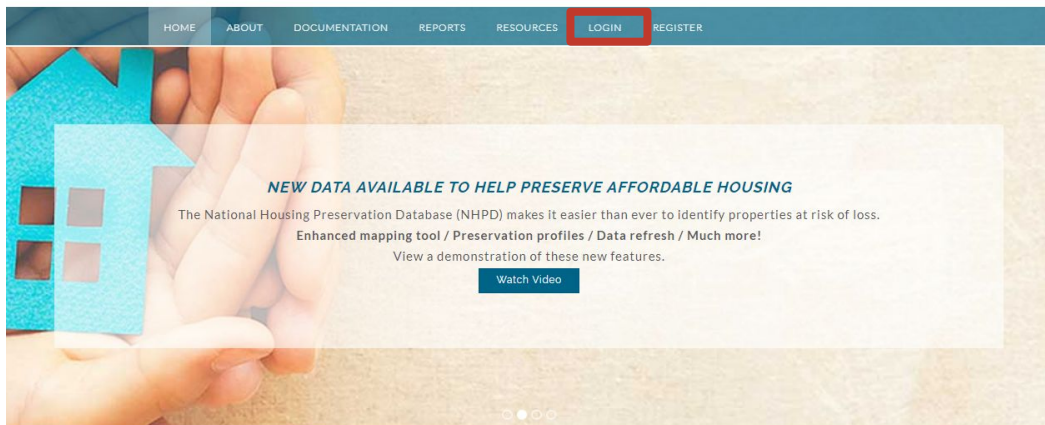
[Read more](#)

Locating Database

Using the NHPD | Database

www.preservationdatabase.org

National Housing Preservation Database (NHPD)



HOME ABOUT DOCUMENTATION REPORTS RESOURCES **LOGIN** REGISTER

NEW DATA AVAILABLE TO HELP PRESERVE AFFORDABLE HOUSING

The National Housing Preservation Database (NHPD) makes it easier than ever to identify properties at risk of loss.

Enhanced mapping tool / Preservation profiles / Data refresh / Much more!

View a demonstration of these new features.

[Watch Video](#)



Reports

View annual reports on the aggregate number of affordable housing properties and units by state and county.

[Read more](#)



Database

Access the database and customize your search of affordable housing properties by location, funding stream, or subsidy end date to support affordable housing preservation efforts.

[Register here](#)



Mapping Tool

Access interactive maps to view where affordable housing is located in your community, identify new affordable properties, and locate properties that are at risk of loss.

[See more](#)



Contribute

Increase the preservation of affordable housing by supporting this important resource for data-driven preservation strategies.

[Read more](#)

Logging In

Using the NHPD | Preservation Profiles

National Housing Preservation Database (NHPD)

[HOME](#)[ABOUT](#)[DOCUMENTATION](#)[REPORTS](#)[RESOURCES](#)[LOGIN](#)[REGISTER](#)

Please sign in

Email

Password

☐ Remember Me?

[SIGN IN](#)

[Register as a new user](#)

[Forgot password?](#)

Logging In

Using the NHPD | Preservation Profiles

National Housing Preservation Database (NHPD)

[HOME](#)[ABOUT](#)[DOCUMENTATION](#)[REPORTS](#)[RESOURCES](#)[LOGIN](#)[REGISTER](#)

Please sign in

Email

Password

☐ Remember Me?

[Register as a new user](#)

[Forgot password?](#)

National Housing Preservation Database (NHPD)

[HOME](#)[ABOUT](#)[DOCUMENTATION](#)[REPORTS](#)[RESOURCES](#)[LOGIN](#)[REGISTER](#)

Data Access:

Signed in as: kmcelwain@housingcenter.com

[FULL DATA ACCESS](#)

Account Settings:

[UPDATE YOUR INFORMATION](#)[CHANGE PASSWORD](#)[SIGN OUT](#)

Logging In

Using the NHPD | Database

National Housing Preservation Database (NHPD)

[HOME](#)[ABOUT](#)[DOCUMENTATION](#)[REPORTS](#)[RESOURCES](#)[LOGIN](#)[REGISTER](#)

Data Access:

Signed in as: kmcelwain@housingcenter.com

[FULL DATA ACCESS](#)

Account Settings:

[UPDATE YOUR INFORMATION](#)[CHANGE PASSWORD](#)[SIGN OUT](#)

Applying Subsidy Filters

Using the NHPD | Database

Subsidy Filters

Subsidy Status:

Program:

APPLY FILTERS

Active and Inconclus

DOWNLOAD COMPLETE DATABASE

Xlsx

EXPORT FILTERED GRID

SHOW ADDITIONAL VARIABLES

Enter text to search...

#	NHPD Property ID	Property Name	Property Address	City	State	Zip Code	Total Units	Total Active Subsidies	Property Status	Earliest Start Date	Latest End Date	Latitude	Longitude	County	Congressional District	Owner Name	Owner Type	
③	1000000	IVY ESTATES	6729 Zeigler Blvd	Mobile	AL	36608-4253	14	1	Active	08/11/2018	08/10/2045	30.708540	-88.200550	Mobile	01	PORT CITY HOUSING INC	Non-Profit	Details
③	1000001	RENDU TERRACE WEST	7400 Old Shell Rd	Mobile	AL	36608-4549	50	1	Active	12/14/2018	12/13/2047	30.693016	-88.214826	Mobile	01	RENDU TERRACE WEST INC	Non-Profit	Details
③	1000002	TWB RESIDENTIAL OPPORTUNITIES II	93 Canal Rd	Port Jefferson Station	NY	11776-3024	12	1	Active	08/05/2018	08/04/2042	40.923630	-73.041180	Suffolk	01	TWB RESIDENTIAL OPPORTUNITIES II INC	Non-Profit	Details
③	1000003	THE DAISY HOUSE	615 Clarissa St	Rochester	NY	14608-2485	49	2	Active	01/05/2019	01/31/2046	43.144760	-77.617220	Monroe	25	DAISY HOUSING DEVELOPMENT FUND COMPANY	Non-Profit	Details
③	1000004	MAIN AVENUE APARTMENTS	105 E Walnut St	Sylacauga	AL	35150-3012	24	1	Active	03/13/2018	03/12/2040	33.163565	-86.248770	Talladega	03	COOSA VALLEY SENIORS HOUSING INC	Non-Profit	Details
③	1000005	PRESBYTERIAN OAKS III	23 Ironaton Rd	Talladega	AL	35160-5033	18	1	Active	08/22/2018	08/21/2048	33.440600	-86.040970	Talladega	03	PRESBYTERIAN OAKS III INC	Non-Profit	Details
③	1000006	AHEPA 310-IX	7560 Olympic Ln	Theodore	AL	36582-3868	50	1	Active	12/19/2018	12/18/2043	30.561990	-88.219500	Mobile	01	AHEPA 310-IX INC	Non-Profit	Details
③	1000007	SUN VALLEY APARTMENTS	375 W Ross St	Batesville	AR	72501-4436	20	1	Active	03/01/2019	02/28/2038	35.774725	-91.662960	Independence	01	SUN VALLEY APTS INC	Non-Profit	Details
③	1000008	INDEPENDENCE APARTMENTS	4040 Harrison St	Batesville	AR	72501-9768	18	1	Active	01/01/2019	12/31/2041	35.767330	-91.590000	Independence	01	INDEPENDENCE APTS INC	Non-Profit	Details
③	1000009	OSAGE HEIGHTS SENIOR HOUSING	3303 SE L St	Bentonville	AR	72712-3706	24	1	Active	03/01/2019	02/28/2041	36.338779	-94.193698	Benton	03	OSAGE HEIGHTS SENIOR HOUSING INC	Non-Profit	Details

Applying Subsidy Filters

Using the NHPD | Database

Subsidy Filters

Subsidy Status:

Program:

APPLY FILTERS

Active and Inconclus

DOWNLOAD COMPLETE DATABASE

Xlsx

EXPORT FILTERED GRID

SHOW ADDITIONAL VARIABLES

Enter text to search...

#	NHPD Property ID	Property Name	Property Address	City	State	Zip Code	Total Units	Total Active Subsidies	Property Status	Earliest Start Date	Latest End Date	Latitude	Longitude	County	Congressional District	Owner Name	Owner Type
1	1000000	IVY ESTATES	6729 Zeigler Blvd	Mobile	AL	36608-4253	14	1	Active	08/11/2018	08/10/2045	30.708540	-88.200550	Mobile	01	PORT CITY HOUSING INC	Non-Profit
2	1000001	RENDU TERRACE WEST	7400 Old Shell Rd	Mobile	AL	36608-4549	50	1	Active	12/14/2018	12/13/2047	30.693016	-88.214826	Mobile	01	RENDU TERRACE WEST INC	Non-Profit
3	1000002	TWB RESIDENTIAL OPPORTUNITIES II	93 Canal Rd	Port Jefferson Station	NY	11776-3024	12	1	Active	08/05/2018	08/04/2042	40.923630	-73.041180	Suffolk	01	TWB RESIDENTIAL OPPORTUNITIES II INC	Non-Profit
4	1000003	THE DAISY HOUSE	615 Clarissa St	Rochester	NY	14608-2485	49	2	Active	01/05/2019	01/31/2046	43.144760	-77.617220	Monroe	25	DAISY HOUSING DEVELOPMENT FUND COMPANY	Non-Profit
5	1000004	MAIN AVENUE APARTMENTS	105 E Walnut St	Sylacauga	AL	35150-3012	24	1	Active	03/13/2018	03/12/2040	33.163565	-86.248770	Talladega	03	COOSA VALLEY SENIORS HOUSING INC	Non-Profit
6	1000005	PRESBYTERIAN OAKS III	23 Ironaton Rd	Talladega	AL	35160-5033	18	1	Active	08/22/2018	08/21/2048	33.440600	-86.040970	Talladega	03	PRESBYTERIAN OAKS III INC	Non-Profit
7	1000006	AHEPA 310-IX	7560 Olympic Ln	Theodore	AL	36582-3868	50	1	Active	12/19/2018	12/18/2043	30.561990	-88.219500	Mobile	01	AHEPA 310-IX INC	Non-Profit
8	1000007	SUN VALLEY APARTMENTS	375 W Ross St	Batesville	AR	72501-4436	20	1	Active	03/01/2019	02/28/2038	35.774725	-91.662960	Independence	01	SUN VALLEY APTS INC	Non-Profit
9	1000008	INDEPENDENCE APARTMENTS	4040 Harrison St	Batesville	AR	72501-9768	18	1	Active	01/01/2019	12/31/2041	35.767330	-91.590000	Independence	01	INDEPENDENCE APTS INC	Non-Profit
10	1000009	OSAGE HEIGHTS SENIOR HOUSING	3303 SE L St	Bentonville	AR	72712-3706	24	1	Active	03/01/2019	02/28/2041	36.338779	-94.193698	Benton	03	OSAGE HEIGHTS SENIOR HOUSING INC	Non-Profit

Using the NHPD | Database

Subsidy Status:

Program: Section 8; LIHTC

Program: Section 8; LIHTC

Section 8: LIHTC

☐ (Select all)

Section 8

☐ HUD Insured

Section 202



☐ Section 515

—

100

[illegible]

Section 200
State of New York
County of New York

[HOME](#)☐ State Subsidy

Close

APPLY FILTERS

Xlsx

EXPORT FILTERED GRID

SHOW ADDITIONAL VARIABLES

Applying Subsidy Filters

Using the NHPD | Database

Subsidy Filters

Subsidy Status:

Program:

Active and Inconclus

☐ (Select all)

☒ Section 8

☐ HUD Insured

☐ Section 202

☒ LIHTC

☐ Section 515

☐ Section 538

☐ Public Housing

☐ Section 236

☐ HOME

☐ State Subsidy

Close

APPLY FILTERS

Xlsx

EXPORT FILTERED GRID

SHOW ADDITIONAL VARIABLES

Enter text to search...

#	NHPD Property ID	Property Name	Property Address	City	State	Zip	Lat	Long	County	Congressional District	Owner Name	Owner Type							
1	1000000	IVY ESTATES	6729 Zeigler Blvd	Mobile															
2	1000001	RENDU TERRACE WEST	7400 Old Shell Rd	Mobile															
3	1000002	TWB RESIDENTIAL OPPORTUNITIES II	93 Canal Rd	Port Jefferson Station															
4	1000003	THE DAISY HOUSE	615 Clarissa St	Rochester	NY	14608-2485	49		2	Active	01/05/2019	01/31/2046	43.144760	-77.617220	Monroe	25	DAISY HOUSING DEVELOPMENT FUND COMPANY	Non-Profit	Details
5	1000004	MAIN AVENUE APARTMENTS	105 E Walnut St	Sylacauga	AL	35150-3012	24		1	Active	03/13/2018	03/12/2040	33.163565	-86.248770	Talladega	03	COOSA VALLEY SENIORS HOUSING INC	Non-Profit	Details
6	1000005	PRESBYTERIAN OAKS III	23 Ironaton Rd	Talladega	AL	35160-5033	18		1	Active	08/22/2018	08/21/2048	33.440600	-86.040970	Talladega	03	PRESBYTERIAN OAKS III INC	Non-Profit	Details
7	1000006	AHEPA 310-IX	7560 Olympic Ln	Theodore	AL	36582-3868	50		1	Active	12/19/2018	12/18/2043	30.561990	-88.219500	Mobile	01	AHEPA 310-IX INC	Non-Profit	Details
8	1000007	SUN VALLEY APARTMENTS	375 W Ross St	Batesville	AR	72501-4436	20		1	Active	03/01/2019	02/28/2038	35.774725	-91.662960	Independence	01	SUN VALLEY APTS INC	Non-Profit	Details
9	1000008	INDEPENDENCE APARTMENTS	4040 Harrison St	Batesville	AR	72501-9768	18		1	Active	01/01/2019	12/31/2041	35.767330	-91.590000	Independence	01	INDEPENDENCE APTS INC	Non-Profit	Details
10	1000009	OSAGE HEIGHTS SENIOR HOUSING	3303 SE L St	Bentonville	AR	72712-3706	24		1	Active	03/01/2019	02/28/2041	36.338779	-94.193698	Benton	03	OSAGE HEIGHTS SENIOR HOUSING INC	Non-Profit	Details

Applying Property Filters

Using the NHPD | Database

Subsidy Filters

Subsidy Status:

Program:

APPLY FILTERS

Active and Inconclus

DOWNLOAD COMPLETE DATABASE

Xlsx

EXPORT FILTERED GRID

SHOW ADDITIONAL VARIABLES

Enter text to search...

#	NHPD Property ID	Property Name	Property Address	City	State	Zip Code	Total Units	Total Active Subsidies	Property Status	Earliest Start Date	Latest End Date	Latitude	Longitude	County	Congressional District	Owner Name	Owner Type
1	1000000	IVY ESTATES	6729 Zeigler Blvd	Mobile	AL	36608-4253	14	1	Active	08/11/2018	08/10/2045	30.708540	-88.200550	Mobile	01	PORT CITY HOUSING INC	Non-Profit
2	1000001	RENDU TERRACE WEST	7400 Old Shell Rd	Mobile	AL	36608-4549	50	1	Active	12/14/2018	12/13/2047	30.693016	-88.214826	Mobile	01	RENDU TERRACE WEST INC	Non-Profit
3	1000002	TWBS RESIDENTIAL OPPORTUNITIES II	93 Canal Rd	Port Jefferson Station	NY	11776-3024	12	1	Active	08/05/2018	08/04/2042	40.923630	-73.041180	Suffolk	01	TWBS RESIDENTIAL OPPORTUNITIES II INC	Non-Profit
4	1000003	THE DAISY HOUSE	615 Clarissa St	Rochester	NY	14608-2485	49	2	Active	01/05/2019	01/31/2046	43.144760	-77.617220	Monroe	25	DAISY HOUSING DEVELOPMENT FUND COMPANY	Non-Profit
5	1000004	MAIN AVENUE APARTMENTS	105 E Walnut St	Sylacauga	AL	35150-3012	24	1	Active	03/13/2018	03/12/2040	33.163565	-86.248770	Talladega	03	COOSA VALLEY SENIORS HOUSING INC	Non-Profit
6	1000005	PRESBYTERIAN OAKS III	23 Ironaton Rd	Talladega	AL	35160-5033	18	1	Active	08/22/2018	08/21/2048	33.440600	-86.040970	Talladega	03	PRESBYTERIAN OAKS III INC	Non-Profit
7	1000006	AHEPA 310-IX	7560 Olympic Ln	Theodore	AL	36582-3868	50	1	Active	12/19/2018	12/18/2043	30.561990	-88.219500	Mobile	01	AHEPA 310-IX INC	Non-Profit
8	1000007	SUN VALLEY APARTMENTS	375 W Ross St	Batesville	AR	72501-4436	20	1	Active	03/01/2019	02/28/2038	35.774725	-91.662960	Independence	01	SUN VALLEY APTS INC	Non-Profit
9	1000008	INDEPENDENCE APARTMENTS	4040 Harrison St	Batesville	AR	72501-9768	18	1	Active	01/01/2019	12/31/2041	35.767330	-91.590000	Independence	01	INDEPENDENCE APTS INC	Non-Profit
10	1000009	OSAGE HEIGHTS SENIOR HOUSING	3303 SE L St	Bentonville	AR	72712-3706	24	1	Active	03/01/2019	02/28/2041	36.338779	-94.193698	Benton	03	OSAGE HEIGHTS SENIOR HOUSING INC	Non-Profit

Applying Property Filters

Using the NHPD | Database

Subsidy Filters

Subsidy Status:

Program:

APPLY FILTERS

Active and Inconclus

DOWNLOAD COMPLETE DATABASE

Xlsx

EXPORT FILTERED GRID

SHOW ADDITIONAL VARIABLES

Enter text to search...																		
#	NHPD Property ID	Property Name	Property Address	City	State	Zip Code	Total Units	Total Active Subsidies	Property Status	Earliest Start Date	Latest End Date	Latitude	Longitude	County	Congressional District	Owner Name	Owner Type	
1	1000000	IVY ESTATES	6729 Zeigler Blvd	Mobile	AL	36608-4253	14	1	Active	08/11/2018	08/10/2045	30.708540	-88.200550	Mobile	01	PORT CITY HOUSING INC	Non-Profit	Details
2	1000001	RENDU TERRACE WEST	7400 Old Shell Rd	Mobile	AL	36608-4549	50	1	Active	12/14/2018	12/13/2047	30.693016	-88.214826	Mobile	01	RENDU TERRACE WEST INC	Non-Profit	Details
3	1000002	TWBS RESIDENTIAL OPPORTUNITIES II	93 Canal Rd	Port Jefferson Station	NY	11776-3024	12	1	Active	08/05/2018	08/04/2042	40.923630	-73.041180	Suffolk	01	TWBS RESIDENTIAL OPPORTUNITIES II INC	Non-Profit	Details
4	1000003	THE DAISY HOUSE	615 Clarissa St	Rochester	NY	14608-2485	49	2	Active	01/05/2019	01/31/2046	43.144760	-77.617220	Monroe	25	DAISY HOUSING DEVELOPMENT FUND COMPANY	Non-Profit	Details
5	1000004	MAIN AVENUE APARTMENTS	105 E Walnut St	Sylacauga	AL	35150-3012	24	1	Active	03/13/2018	03/12/2040	33.163565	-86.248770	Talladega	03	COOSA VALLEY SENIORS HOUSING INC	Non-Profit	Details
6	1000005	PRESBYTERIAN OAKS III	23 Ironaton Rd	Talladega	AL	35160-5033	18	1	Active	08/22/2018	08/21/2048	33.440600	-86.040970	Talladega	03	PRESBYTERIAN OAKS III INC	Non-Profit	Details
7	1000006	AHEPA 310-IX	7560 Olympic Ln	Theodore	AL	36582-3868	50	1	Active	12/19/2018	12/18/2043	30.561990	-88.219500	Mobile	01	AHEPA 310-IX INC	Non-Profit	Details
8	1000007	SUN VALLEY APARTMENTS	375 W Ross St	Batesville	AR	72501-4436	20	1	Active	03/01/2019	02/28/2038	35.774725	-91.662960	Independence	01	SUN VALLEY APTS INC	Non-Profit	Details
9	1000008	INDEPENDENCE APARTMENTS	4040 Harrison St	Batesville	AR	72501-9768	18	1	Active	01/01/2019	12/31/2041	35.767330	-91.590000	Independence	01	INDEPENDENCE APTS INC	Non-Profit	Details
10	1000009	OSAGE HEIGHTS SENIOR HOUSING	3303 SE L St	Bentonville	AR	72712-3706	24	1	Active	03/01/2019	02/28/2041	36.338779	-94.193698	Benton	03	OSAGE HEIGHTS SENIOR HOUSING INC	Non-Profit	Details

Applying Property Filters

Using the NHPD | Database

Subsidy Filters

Subsidy Status:

Program:

APPLY FILTERS

Active and Inconclus

DOWNLOAD COMPLETE DATABASE

Xlsx

EXPORT FILTERED GRID

SHOW ADDITIONAL VARIABLES

Enter text to search...																		
#	NHPD Property ID	Property Name	Property Address	City	State	Zip Code	Total Units	Total Active Subsidies	Property Status	Earliest Start Date	Latest End Date	Latitude	Longitude	County	Congressional District	Owner Name	Owner Type	
+	1000000	IVY ESTATES	6729 Zeigler Blvd	Mobile	AL	36608-4253	14	1	Active			30.708540	-88.200550	Mobile	01	PORT CITY HOUSING INC	Non-Profit	Details
+	1000001	RENDU TERRACE WEST	7400 Old Shell Rd	Mobile	AL	36608-4549	50	1	Active			30.693016	-88.214826	Mobile	01	RENDU TERRACE WEST INC	Non-Profit	Details
+	1000002	TWB RESIDENTIAL OPPORTUNITIES II	93 Canal Rd	Port Jefferson Station	NY	11776-3024	12	1	Active			40.923630	-73.041180	Suffolk	01	TWB RESIDENTIAL OPPORTUNITIES II INC	Non-Profit	Details
+	1000003	THE DAISY HOUSE	615 Clarissa St	Rochester	NY	14608-2485	49	2	Active			43.144760	-77.617220	Monroe	25	DAISY HOUSING DEVELOPMENT FUND COMPANY	Non-Profit	Details
+	1000004	MAIN AVENUE APARTMENTS	105 E Walnut St	Sylacauga	AL	35150-3012	24	1	Active			33.163555	-86.248770	Talladega	03	COOSA VALLEY SENIORS HOUSING INC	Non-Profit	Details
+	1000005	PRESBYTERIAN OAKS III	23 Ironaton Rd	Talladega	AL	35160-5033	18	1	Active	08/22/2018	08/21/2048	33.440600	-86.040970	Talladega	03	PRESBYTERIAN OAKS III INC	Non-Profit	Details
+	1000006	AHEPA 310-IX	7560 Olympic Ln	Theodore	AL	36582-3868	50	1	Active	12/19/2018	12/18/2043	30.561990	-88.219500	Mobile	01	AHEPA 310-IX INC	Non-Profit	Details
+	1000007	SUN VALLEY APARTMENTS	375 W Ross St	Batesville	AR	72501-4436	20	1	Active	03/01/2019	02/28/2038	35.774725	-91.662960	Independence	01	SUN VALLEY APTS INC	Non-Profit	Details
+	1000008	INDEPENDENCE APARTMENTS	4040 Harrison St	Batesville	AR	72501-9768	18	1	Active	01/01/2019	12/31/2041	35.767330	-91.590000	Independence	01	INDEPENDENCE APTS INC	Non-Profit	Details
+	1000009	OSAGE HEIGHTS SENIOR HOUSING	3303 SE L St	Bentonville	AR	72712-3706	24	1	Active	03/01/2019	02/28/2041	36.338779	-94.193698	Benton	03	OSAGE HEIGHTS SENIOR HOUSING INC	Non-Profit	Details

Applying Property Filters

Using the NHPD | Database

Subsidy Filters

Subsidy Status:

Program:

APPLY FILTERS

Active and Inconclus

DOWNLOAD COMPLETE DATABASE

Xlsx

EXPORT FILTERED GRID

SHOW ADDITIONAL VARIABLES

Enter text to search...																			
#	NHPD Property ID	Property Name	Property Address	City	State	Zip Code	Total Units	Total Active Subsidies	Property Status	Earliest Start Date	Latest End Date	Latitude	Longitude	County	Congressional District	Owner Name	Owner Type		
+	1000000	IVY ESTATES	6729 Zeigler Blvd	Mobile	AL	36608-4253	14	1	Active			30.708540	-88.200550	Mobile	01	PORT CITY HOUSING INC	Non-Profit		Details
+	1000001	RENDU TERRACE WEST	7400 Old Shell Rd	Mobile	AL	36608-4549	50	1	Active			30.693016	-88.214826	Mobile	01	RENDU TERRACE WEST INC	Non-Profit		Details
+	1000002	TWB RESIDENTIAL OPPORTUNITIES II	93 Canal Rd	Port Jefferson Station	NY	11776-3024	12	1	Active			40.923630	-73.041180	Suffolk	01	TWB RESIDENTIAL OPPORTUNITIES II INC	Non-Profit		Details
+	1000003	THE DAISY HOUSE	615 Clarissa St	Rochester	NY	14608-2485	49	2	Active			43.144760	-77.617220	Monroe	25	DAISY HOUSING DEVELOPMENT FUND COMPANY	Non-Profit		Details
+	1000004	MAIN AVENUE APARTMENTS	105 E Walnut St	Sylacauga	AL	35150-3012	24	1	Active			33.163565	-86.248770	Talladega	03	COOSA VALLEY SENIORS HOUSING INC	Non-Profit		Details
+	1000005	PRESBYTERIAN OAKS III	23 Ironaton Rd	Talladega	AL	35160-5033	18	1	Active	08/22/2018	08/21/2048	33.440600	-86.040970	Talladega	03	PRESBYTERIAN OAKS III INC	Non-Profit		Details
+	1000006	AHEPA 310-IX	7560 Olympic Ln	Theodore	AL	36582-3868	50	1	Active	12/19/2018	12/18/2043	30.561990	-88.219500	Mobile	01	AHEPA 310-IX INC	Non-Profit		Details
+	1000007	SUN VALLEY APARTMENTS	375 W Ross St	Batesville	AR	72501-4436	20	1	Active	03/01/2019	02/28/2038	35.774725	-91.662960	Independence	01	SUN VALLEY APTS INC	Non-Profit		Details
+	1000008	INDEPENDENCE APARTMENTS	4040 Harrison St	Batesville	AR	72501-9768	18	1	Active	01/01/2019	12/31/2041	35.767330	-91.590000	Independence	01	INDEPENDENCE APTS INC	Non-Profit		Details
+	1000009	OSAGE HEIGHTS SENIOR HOUSING	3303 SE L St	Bentonville	AR	72712-3706	24	1	Active	03/01/2019	02/28/2041	36.338779	-94.193698	Benton	03	OSAGE HEIGHTS SENIOR HOUSING INC	Non-Profit		Details

☒ (Select All)

☒ Active

☐ Inactive

☒ Inconclusive

OK

Cancel

Applying Property Filters

Using the NHPD | Database

Subsidy Filters

Subsidy Status:

Program:

APPLY FILTERS

Active and Inconclus

DOWNLOAD COMPLETE DATABASE

Xlsx

EXPORT FILTERED GRID

SHOW ADDITIONAL VARIABLES

Enter text to search...

#	NHPD Property ID	Property Name	Property Address	City	State	Zip Code	Total Units	Total Active Subsidies	Property Status	Earliest Start Date	Latest End Date	Latitude	Longitude	County	Congressional District	Owner Name	Owner Type
Clear																	
+	1000000	IVY ESTATES	6729 Zeigler Blvd	Mobile	AL	36608-4253	14	1	Active	08/11/2018	08/10/2045	30.708540	-88.200550	Mobile	01	PORT CITY HOUSING INC	Non-Profit
+	1000001	RENDU TERRACE WEST	7400 Old Shell Rd	Mobile	AL	36608-4549	50	1	Active	12/14/2018	12/13/2047	30.693016	-88.214826	Mobile	01	RENDU TERRACE WEST INC	Non-Profit
+	1000002	TWB RESIDENTIAL OPPORTUNITIES II	93 Canal Rd	Port Jefferson Station	NY	11776-3024	12	1	Active	08/05/2018	08/04/2042	40.923630	-73.041180	Suffolk	01	TWB RESIDENTIAL OPPORTUNITIES II INC	Non-Profit
+	1000003	THE DAISY HOUSE	615 Clarissa St	Rochester	NY	14608-2485	49	2	Active	01/05/2019	01/31/2046	43.144760	-77.617220	Monroe	25	DAISY HOUSING DEVELOPMENT FUND COMPANY	Non-Profit
+	1000004	MAIN AVENUE APARTMENTS	105 E Walnut St	Sylacauga	AL	35150-3012	24	1	Active	03/13/2018	03/12/2040	33.163565	-86.248770	Talladega	03	COOSA VALLEY SENIORS HOUSING INC	Non-Profit
+	1000005	PRESBYTERIAN OAKS III	23 Ironaton Rd	Talladega	AL	35160-5033	18	1	Active	08/22/2018	08/21/2048	33.440600	-86.040970	Talladega	03	PRESBYTERIAN OAKS III INC	Non-Profit
+	1000006	AHEPA 310-IX	7560 Olympic Ln	Theodore	AL	36582-3868	50	1	Active	12/19/2018	12/18/2043	30.561990	-88.219500	Mobile	01	AHEPA 310-IX INC	Non-Profit
+	1000007	SUN VALLEY APARTMENTS	375 W Ross St	Batesville	AR	72501-4436	20	1	Active	03/01/2019	02/28/2038	35.774725	-91.662960	Independence	01	SUN VALLEY APTS INC	Non-Profit
+	1000008	INDEPENDENCE APARTMENTS	4040 Harrison St	Batesville	AR	72501-9768	18	1	Active	01/01/2019	12/31/2041	35.767330	-91.590000	Independence	01	INDEPENDENCE APTS INC	Non-Profit
+	1000009	OSAGE HEIGHTS SENIOR HOUSING	3303 SE L St	Bentonville	AR	72712-3706	24	1	Active	03/01/2019	02/28/2041	36.338779	-94.193698	Benton	03	OSAGE HEIGHTS SENIOR HOUSING INC	Non-Profit

Applying Property Filters

Using the NHPD | Database

Subsidy Filters

Subsidy Status:

Program:

APPLY FILTERS

Active and Inconclus

DOWNLOAD COMPLETE DATABASE

Xlsx

EXPORT FILTERED GRID

SHOW ADDITIONAL VARIABLES

Enter text to search...																		
#	NHPD Property ID	Property Name	Property Address	City	State	Zip Code	Total Units	Total Active Subsidies	Property Status	Earliest Start Date	Latest End Date	Latitude	Longitude	County	Congressional District	Owner Name	Owner Type	
Clear																		
+	1000000	IVY ESTATES	6729 Zeigler Blvd	Mobile	AL	36608-4253	14	1	Active	08/11/2018	08/10/2045	30.708540	-88.200550	Mobile	01	PORT CITY HOUSING INC	Non-Profit	Details
+	1000001	RENDU TERRACE WEST	7400 Old Shell Rd	Mobile	AL	36608-4549	50	1	Active	12/14/2018	12/13/2047	30.693016	-88.214826	Mobile	01	RENDU TERRACE WEST INC	Non-Profit	Details
+	1000002	TWB RESIDENTIAL OPPORTUNITIES II	93 Canal Rd	Port Jefferson Station	NY	11776-3024	12	1	Active	08/05/2018	08/04/2042	40.923630	-73.041180	Suffolk	01	TWB RESIDENTIAL OPPORTUNITIES II INC	Non-Profit	Details
+	1000003	THE DAISY HOUSE	615 Clarissa St	Rochester	NY	14608-2485	49	2	Active	01/05/2019	01/31/2046	43.144760	-77.617220	Monroe	25	DAISY HOUSING DEVELOPMENT FUND COMPANY	Non-Profit	Details
+	1000004	MAIN AVENUE APARTMENTS	105 E Walnut St	Sylacauga	AL	35150-3012	24	1	Active	03/13/2018	03/12/2040	33.163565	-86.248770	Talladega	03	COOSA VALLEY SENIORS HOUSING INC	Non-Profit	Details
+	1000005	PRESBYTERIAN OAKS III	23 Ironaton Rd	Talladega	AL	35160-5033	18	1	Active	08/22/2018	08/21/2048	33.440600	-86.040970	Talladega	03	PRESBYTERIAN OAKS III INC	Non-Profit	Details
+	1000006	AHEPA 310-IX	7560 Olympic Ln	Theodore	AL	36582-3868	50	1	Active	12/19/2018	12/18/2043	30.561990	-88.219500	Mobile	01	AHEPA 310-IX INC	Non-Profit	Details
+	1000007	SUN VALLEY APARTMENTS	375 W Ross St	Batesville	AR	72501-4436	20	1	Active	03/01/2019	02/28/2038	35.774725	-91.662960	Independence	01	SUN VALLEY APTS INC	Non-Profit	Details
+	1000008	INDEPENDENCE APARTMENTS	4040 Harrison St	Batesville	AR	72501-9768	18	1	Active	01/01/2019	12/31/2041	35.767330	-91.590000	Independence	01	INDEPENDENCE APTS INC	Non-Profit	Details
+	1000009	OSAGE HEIGHTS SENIOR HOUSING	3303 SE L St	Bentonville	AR	72712-3706	24	1	Active	03/01/2019	02/28/2041	36.338779	-94.193698	Benton	03	OSAGE HEIGHTS SENIOR HOUSING INC	Non-Profit	Details

Applying Property Filters

Using the NHPD | Database

Subsidy Filters

Subsidy Status:

Program:

APPLY FILTERS

Active and Inconclus

DOWNLOAD COMPLETE DATABASE

Xlsx

EXPORT FILTERED GRID

SHOW ADDITIONAL VARIABLES

Enter text to search...																		
#	NHPD Property ID	Property Name	Property Address	City	State	Zip Code	Total Units	Total Active Subsidies	Property Status	Earliest Start Date	Latest End Date	Latitude	Longitude	County	Congressional District	Owner Name	Owner Type	
Clear					CT													
③	1000119	BARBOUR-KENSINGTON APARTMENTS	312 Barbour St	Hartford	CT	06120-1002	36	1	Active	11/01/1973	08/31/2036	41.793710	-72.677050	Hartford	01	THE HARTFORD COMMUNITIES I LLC	Profit Motivated	Details
③	1000121	SAINT MARTIN TOWNHOUSES	200 Goffe St	New Haven	CT	06511-3362	63	1	Active	10/01/2018	08/31/2019	41.316290	-72.935640	New Haven	03	ST MARTINS PRESERVATION LP	Profit Motivated	Details
③	1000123	ANTILLEAN MANOR COOPERATIVE	206 Day St	New Haven	CT	06511-4518	31	1	Active	06/01/2018	05/31/2019	41.310700	-72.939080	New Haven	03	ANTILLEAN MANOR COOPERATIVE INC	Non-Profit	Details
③	1000125	LEGION WOODS	442 Legion Ave	New Haven	CT	06519	20	1	Active	06/01/2018	05/31/2041	41.297400	-72.936100	New Haven	03	THE CONNECTION FUND REALTY INC	Non-Profit	Details
③	1000127	WOODS EDGE HOUSING	522 Pool Rd	North Haven	CT	06473-1421	40	1	Active	07/01/2018	06/30/2039	41.403880	-72.839430	New Haven	03	WOODS EDGE HOUSING INC	Non-Profit	Details
③	1000129	FAIRFIELD COMMONS I	20 Fairfield Ave	Stamford	CT	06902-4919	6	1	Active	09/01/2018	08/31/2019	41.051245	-73.550977	Fairfield	04	MHA FAIRFIELD COMMONS I INC	Non-Profit	Details
③	1000131	LIBERTY HOUSING	40 Liberty St	Stamford	CT	06902-4731	12	1	Active	10/01/2017	09/30/2021	41.049240	-73.554350	Fairfield	04	LIBERTY HOUSING CO	Profit Motivated	Details
③	1000133	NEW ALGIERS	86 W MAIN ST	STAMFORD	CT	06902	12	1	Active	03/22/2014	03/21/2034	41.051500	-73.546090	Fairfield	04	NEW ALGIERS ASSOCIATES LIMITED PARTNERSHIP	Profit Motivated	Details
③	1000854	OLDE SCHOOL COMMONS	1055 Pembroke St	Bridgeport	CT	06608-2083	19	1	Active	07/01/2017	06/30/2037	41.188527	-73.178056	Fairfield	04	OLDE SCHOOL COMMONS LIMITED PARTNERSHIP	Non-Profit	Details
③	1001500	BROAD RIVER HOMES	108 New Canaan Ave	Norwalk	CT	06850-2630	49	2	Active	03/01/2005	02/01/2040	41.127610	-73.433490	Fairfield	04	NORWALK CONGREGATE HOMES FOR THE ELDERLY INC	Non-Profit	Details

Applying Property Filters

Using the NHPD | Database

Subsidy Filters

Subsidy Status:

Program:

APPLY FILTERS

Active and Inconclus

DOWNLOAD COMPLETE DATABASE

Xlsx

EXPORT FILTERED GRID

SHOW ADDITIONAL VARIABLES

Enter text to search...

#	NHPD Property ID	Property Name	Property Address	City	State	Zip Code	Total Units	Total Active Subsidies	Property Status	Earliest Start Date	Latest End Date	Latitude	Longitude	County	Congressional District	Owner Name	Owner Type	
Clear					<input type="text" value="CT"/>													
③	1000119	BARBOUR-KENSINGTON APARTMENTS	312 Barbour St	Hartford	CT	06120-1002	36	1	Active	11/01/1973	08/31/2036	41.793710	-72.677050	Hartford	01	THE HARTFORD COMMUNITIES I LLC	Profit Motivated	Details
③	1000121	SAINT MARTIN TOWNHOUSES	200 Goffe St	New Haven	CT	06511-3362	63	1	Active	10/01/2018	08/31/2019	41.316290	-72.935640	New Haven	03	ST MARTINS PRESERVATION LP	Profit Motivated	Details
③	1000123	ANTILLEAN MANOR COOPERATIVE	206 Day St	New Haven	CT	06511-4518	31	1	Active	06/01/2018	05/31/2019	41.310700	-72.939080	New Haven	03	ANTILLEAN MANOR COOPERATIVE INC	Non-Profit	Details
③	1000125	LEGION WOODS	442 Legion Ave	New Haven	CT	06519	20	1	Active	06/01/2018	05/31/2041	41.297400	-72.936100	New Haven	03	THE CONNECTION FUND REALTY INC	Non-Profit	Details
③	1000127	WOODS EDGE HOUSING	522 Pool Rd	North Haven	CT	06473-1421	40	1	Active	07/01/2018	06/30/2039	41.403880	-72.839430	New Haven	03	WOODS EDGE HOUSING INC	Non-Profit	Details
③	1000129	FAIRFIELD COMMONS I	20 Fairfield Ave	Stamford	CT	06902-4919	6	1	Active	09/01/2018	08/31/2019	41.051245	-73.550977	Fairfield	04	MHA FAIRFIELD COMMONS I INC	Non-Profit	Details
③	1000131	LIBERTY HOUSING	40 Liberty St	Stamford	CT	06902-4731	12	1	Active	10/01/2017	09/30/2021	41.049240	-73.554350	Fairfield	04	LIBERTY HOUSING CO	Profit Motivated	Details
③	1000133	NEW ALGIERS	86 W MAIN ST	STAMFORD	CT	06902	12	1	Active	03/22/2014	03/21/2034	41.051500	-73.546090	Fairfield	04	NEW ALGIERS ASSOCIATES LIMITED PARTNERSHIP	Profit Motivated	Details
③	1000854	OLDE SCHOOL COMMONS	1055 Pembroke St	Bridgeport	CT	06608-2083	19	1	Active	07/01/2017	06/30/2037	41.188527	-73.178056	Fairfield	04	OLDE SCHOOL COMMONS LIMITED PARTNERSHIP	Non-Profit	Details
③	1001500	BROAD RIVER HOMES	108 New Canaan Ave	Norwalk	CT	06850-2630	49	2	Active	03/01/2005	02/01/2040	41.127610	-73.433490	Fairfield	04	NORWALK CONGREGATE HOMES FOR THE ELDERLY INC	Non-Profit	Details

Using the NHPD | Database

Subsidy Status:

Program:

Section 8; LIHTC

APPLY FILTERS

Active and Inconclus [DOWNLOAD COMPLETE DATABASE](#)

Xlsx ▾

EXPO

April 2024

	SUN	MON	TUE	WED	THU	FRI	SAT
14	31	1	2	3	4	5	6
15	7	8	9	10	11	12	13
16	14	15	16	17	18	19	20
17	21	22	23	24	25	26	27
18	28	29	30	1	2	3	4
19	5	6	7	8	9	10	11

Today Clear

Using the NHPD | Database

ADDITIONAL VARIABLES

A screenshot of a calendar application. At the top, the month and year "April 2024" are displayed in blue. Below this is a calendar grid with days of the week (SUN to SAT) as column headers. The dates are arranged in rows. The date "9" is highlighted with a red box. Navigation buttons (back, forward, today, clear) are visible at the bottom.

	SUN	MON	TUE	WED	THU	FRI	SAT
14	31	1	2	3	4	5	6
15	7	8	9	10	11	12	13
16	14	15	16	17	18	19	20
17	21	22	23	24	25	26	27
18	28	29	30	1	2	3	4
19	5	6	7	8	9	10	11

Buttons: Today, Clear

Applying Property Filters

Using the NHPD | Database

Subsidy Filters

Subsidy Status:

Program:

APPLY FILTERS

Active and Inconclus

DOWNLOAD COMPLETE DATABASE

Xlsx

EXPORT FILTERED GRID

SHOW ADDITIONAL VARIABLES

Enter text to search...

#	NHPD Property ID	Property Name	Property Address	City	State	Zip Code	Total Units	Total Active Subsidies	Property Status	Earliest Start Date	Latest End Date	Latitude	Longitude	County	Congressional District	Owner Name	Owner Type
Clear					CT						4						
No data to display																	

Applying Property Filters

Using the NHPD | Database

Subsidy Filters

Subsidy Status:

Program:

APPLY FILTERS

Active and Inconclus

DOWNLOAD COMPLETE DATABASE

Xlsx

EXPORT FILTERED GRID

SHOW ADDITIONAL VARIABLES

Enter text to search...

#	NHPD Property ID	Property Name	Property Address	City	State	Zip Code	Total Units	Total Active Subsidies	Property Status	Earliest Start Date	Latest End Date	Latitude	Longitude	County	Congressional District	Owner Name	Owner Type
Clear					CT						4						
No data to display																	

Applying Property Filters

Using the NHPD | Database

Subsidy Filters

Subsidy Status:

Program:

APPLY FILTERS

Active and Inconclus

DOWNLOAD COMPLETE DATABASE

Xlsx

EXPORT FILTERED GRID

SHOW ADDITIONAL VARIABLES

Enter text to search...

#	NHPD Property ID	Property Name	Property Address	City	State	Zip Code	Total Units	Total Active Subsidies	Property Status	Earliest Start Date	Latest End Date	Latitude	Longitude	County	Congressional District	Owner Name	Owner Type
Clear					CT						4						
No data to display																	

- ✓ Equals
- Doesn't equal
- Is less than
- Is less than or equal to
- Is greater than
- Is greater than or equal to

Applying Property Filters

Using the NHPD | Database

Subsidy Filters

Subsidy Status:

Program:

APPLY FILTERS

Active and Inconclus

DOWNLOAD COMPLETE DATABASE

Xlsx

EXPORT FILTERED GRID

SHOW ADDITIONAL VARIABLES

Enter text to search...

#	NHPD Property ID	Property Name	Property Address	City	State	Zip Code	Total Units	Total Active Subsidies	Property Status	Earliest Start Date	Latest End Date	Latitude	Longitude	County	Congressional District	Owner Name	Owner Type
Clear					CT						4						
No data to display																	

- ✓ Equals
- Doesn't equal
- Is less than
- Is less than or equal to
- Is greater than
- Is greater than or equal to

Applying Property Filters

Using the NHPD | Database

Subsidy Filters

Subsidy Status:

Program:

APPLY FILTERS

Active and Inconclus

DOWNLOAD COMPLETE DATABASE

Xlsx

EXPORT FILTERED GRID

SHOW ADDITIONAL VARIABLES

Enter text to search...

#	NHPD Property ID	Property Name	Property Address	City	State	Zip Code	Total Units	Total Active Subsidies	Property Status	Earliest Start Date	Latest End Date	Latitude	Longitude	County	Congressional District	Owner Name	Owner Type	
Clear					CT						4/							
③	1000121	SAINT MARTIN TOWNHOUSES	200 Goffe St	New Haven	CT	06511-3362	63	1	Active	10/01/2018	08/31/2019	41.316290	-72.935640	New Haven	03	ST MARTINS PRESERVATION LP	Profit Motivated	Details
③	1000123	ANTILLEAN MANOR COOPERATIVE	206 Day St	New Haven	CT	06511-4518	31	1	Active	06/01/2018	05/31/2019	41.310700	-72.939080	New Haven	03	ANTILLEAN MANOR COOPERATIVE INC	Non-Profit	Details
③	1000129	FAIRFIELD COMMONS I	20 Fairfield Ave	Stamford	CT	06902-4919	6	1	Active	09/01/2018	08/31/2019	41.051245	-73.550977	Fairfield	04	MHA FAIRFIELD COMMONS I INC	Non-Profit	Details
③	1000131	LIBERTY HOUSING	40 Liberty St	Stamford	CT	06902-4731	12	1	Active	10/01/2017	09/30/2021	41.049240	-73.554350	Fairfield	04	LIBERTY HOUSING CO	Profit Motivated	Details
③	1002060	SAINT MARY'S ELDERLY APARTMENTS	1451 Main St	East Hartford	CT	06108-1683	56	2	Active	01/01/1981	09/30/2020	41.778310	-72.637950	Hartford	01	ST MARY'S HOUSING PARTNERSHIP	Profit Motivated	Details
③	1013468	CASTLE APARTMENTS	100 Norton Park Rd	Plainville	CT	06062-2628	46	2	Active	06/01/2014	05/31/2019	41.661940	-72.877626	Hartford	05	CASTLE APTS INC	Multiple	Details
③	1013510	GODFREY THE	317 Main St	Danbury	CT	06810-5854	9	2	Active	07/22/1986	05/31/2019	41.397000	-73.454880	Fairfield	05	THE GODFREY	Multiple	Details
③	1013612	HEVRIN TERRACE	71 Keating St	Willimantic	CT	06226-1211	90	2	Active	07/01/1954	06/30/2021	41.721570	-72.233100	Windham	02	THE HOUSING AUTHORITY OF THE CITY OF WILLIMANTIC	Multiple	Details
③	1013666	MARCH INC	636 Middle Tpke E	Manchester	CT	06040-3728	4	2	Active	05/09/1982	04/30/2022	41.785112	-72.493401	Hartford	01	MARCH INC OF MANCHESTER	Multiple	Details
③	1014845	PARK APARTMENTS	365 Garden St	Hartford	CT	06112-2415	98	1	Active	01/01/1973	05/31/2020	41.780020	-72.684960	Hartford	01	THE HARTFORD COMMUNITIES LLC	Profit Motivated	Details
③	1014906	CHURCH STREET SOUTH APARTMENTS	34 Cinque Grn	New Haven	CT	06519-2204	204	1	Active	10/01/1971	08/31/2019	41.298720	-72.928070	New Haven	03	CHURCH STREET NEW HAVEN LLC	Profit Motivated	Details

Showing Additional Variables

Using the NHPD | Database

Subsidy Filters

Subsidy Status:

Program:

APPLY FILTERS

Active and Inconclus

DOWNLOAD COMPLETE DATABASE

Xlsx

EXPORT FILTERED GRID

SHOW ADDITIONAL VARIABLES

Enter text to search...																		
#	NHPD Property ID	Property Name	Property Address	City	State	Zip Code	Total Units	Total Active Subsidies	Property Status	Earliest Start Date	Latest End Date	Latitude	Longitude	County	Congressional District	Owner Name	Owner Type	
Clear					CT						4/							
③	1000121	SAINT MARTIN TOWNHOUSES	200 Goffe St	New Haven	CT	06511-3362	63	1	Active	10/01/2018	08/31/2019	41.316290	-72.935640	New Haven	03	ST MARTINS PRESERVATION LP	Profit Motivated	Details
③	1000123	ANTILLEAN MANOR COOPERATIVE	206 Day St	New Haven	CT	06511-4518	31	1	Active	06/01/2018	05/31/2019	41.310700	-72.939080	New Haven	03	ANTILLEAN MANOR COOPERATIVE INC	Non-Profit	Details
③	1000129	FAIRFIELD COMMONS I	20 Fairfield Ave	Stamford	CT	06902-4919	6	1	Active	09/01/2018	08/31/2019	41.051245	-73.550977	Fairfield	04	MHA FAIRFIELD COMMONS I INC	Non-Profit	Details
③	1000131	LIBERTY HOUSING	40 Liberty St	Stamford	CT	06902-4731	12	1	Active	10/01/2017	09/30/2021	41.049240	-73.554350	Fairfield	04	LIBERTY HOUSING CO	Profit Motivated	Details
③	1002060	SAINT MARY'S ELDERLY APARTMENTS	1451 Main St	East Hartford	CT	06108-1683	56	2	Active	01/01/1981	09/30/2020	41.778310	-72.637950	Hartford	01	ST MARY'S HOUSING PARTNERSHIP	Profit Motivated	Details
③	1013468	CASTLE APARTMENTS	100 Norton Park Rd	Plainville	CT	06062-2628	46	2	Active	06/01/2014	05/31/2019	41.661940	-72.877626	Hartford	05	CASTLE APTS INC	Multiple	Details
③	1013510	GODFREY THE	317 Main St	Danbury	CT	06810-5854	9	2	Active	07/22/1986	05/31/2019	41.397000	-73.454880	Fairfield	05	THE GODFREY	Multiple	Details
③	1013612	HEVRIN TERRACE	71 Keating St	Willimantic	CT	06226-1211	90	2	Active	07/01/1954	06/30/2021	41.721570	-72.233100	Windham	02	THE HOUSING AUTHORITY OF THE CITY OF WILLIMANTIC	Multiple	Details
③	1013666	MARCH INC	636 Middle Tpke E	Manchester	CT	06040-3728	4	2	Active	05/09/1982	04/30/2022	41.785112	-72.493401	Hartford	01	MARCH INC OF MANCHESTER	Multiple	Details
③	1014845	PARK APARTMENTS	365 Garden St	Hartford	CT	06112-2415	98	1	Active	01/01/1973	05/31/2020	41.780020	-72.684960	Hartford	01	THE HARTFORD COMMUNITIES LLC	Profit Motivated	Details
③	1014906	CHURCH STREET SOUTH APARTMENTS	34 Cinque Grn	New Haven	CT	06519-2204	204	1	Active	10/01/1971	08/31/2019	41.298720	-72.928070	New Haven	03	CHURCH STREET NEW HAVEN LLC	Profit Motivated	Details

Showing Additional Variables

Using the NHPD | Database

Subsidy Filters

Subsidy Status:

Program:

APPLY FILTERS

Active and Inconclus

DOWNLOAD COMPLETE DATABASE

Xlsx

EXPORT FILTERED GRID

HIDE ADDITIONAL VARIABLES

Enter text to search...																	
#	NHPD Property ID	Property Name	Property Address	City	State	Zip Code	Total Units	Total Active Subsidies	Property Status	Earliest Start Date	Latest End Date	Latitude	Longitude	County	Congressional District	Owner Name	
Clear					CT						4/						
+	1000121	SAINT MARTIN TOWNHOUSES	200 Goffe St	New Haven	CT	06511-3362	63	1	Active	10/01/2018	08/31/2019	41.316290	-72.935640	New Haven	03	ST MARTIN PRESERVA	Details
+	1000123	ANTILLEAN MANOR COOPERATIVE	206 Day St	New Haven	CT	06511-4518	31	1	Active	06/01/2018	05/31/2019	41.310700	-72.939080	New Haven	03	ANTILLEAN COOPERA	Details
+	1000129	FAIRFIELD COMMONS I	20 Fairfield Ave	Stamford	CT	06902-4919	6	1	Active	09/01/2018	08/31/2019	41.051245	-73.550977	Fairfield	04	MHA FAIRFIELD COMMONS	Details
+	1000131	LIBERTY HOUSING	40 Liberty St	Stamford	CT	06902-4731	12	1	Active	10/01/2017	09/30/2021	41.049240	-73.554350	Fairfield	04	LIBERTY H	Details
+	1002060	SAINT MARY'S ELDERLY APARTMENTS	1451 Main St	East Hartford	CT	06108-1683	56	2	Active	01/01/1981	09/30/2020	41.778310	-72.637950	Hartford	01	ST MARY'S PARTNERS	Details
+	1013468	CASTLE APARTMENTS	100 Norton Park Rd	Plainville	CT	06062-2628	46	2	Active	06/01/2014	05/31/2019	41.661940	-72.877626	Hartford	05	CASTLE AP	Details
+	1013510	GODFREY THE	317 Main St	Danbury	CT	06810-5854	9	2	Active	07/22/1986	05/31/2019	41.397000	-73.454880	Fairfield	05	THE GODF	Details
+	1013612	HEVRIN TERRACE	71 Keating St	Willimantic	CT	06226-1211	90	2	Active	07/01/1954	06/30/2021	41.721570	-72.233100	Windham	02	THE HOUSE OF THE CI WILLIMANT	Details
+	1013666	MARCH INC	636 Middle Tpke E	Manchester	CT	06040-3728	4	2	Active	05/09/1982	04/30/2022	41.785112	-72.493401	Hartford	01	MARCH IN MANCHES	Details
+	1014845	PARK APARTMENTS	365 Garden St	Hartford	CT	06112-2415	98	1	Active	01/01/1973	05/31/2020	41.780020	-72.684960	Hartford	01	THE HART COMMUNI	Details
+	1014906	CHURCH STREET SOUTH APARTMENTS	34 Cinque Grn	New Haven	CT	06519-2204	204	1	Active	10/01/1971	08/31/2019	41.298720	-72.928070	New Haven	03	CHURCH STREET NEW HAVEN LLC	Details
																Profit Motivated	

Column Chooser

0-1 Bedroom Units

Average Months of Tenancy

CBSA Type

CBSA Code

Census Tract

County Code

Earliest Construction Date

Earliest End Date

Fair Market Rent

HUD Property Id

Last REAC Date

Latest Construction Date

Manager Name

Manager Type

Occupancy Rate

Percent of ELI Households

REAC Date 2

REAC Date 3

REAC Score 1

REAC Score 2

REAC Score 3

Showing Additional Variables

Using the NHPD | Database

Subsidy Filters

Subsidy Status:

Program:

APPLY FILTERS

Active and Inconclus

DOWNLOAD COMPLETE DATABASE

Xlsx

EXPORT FILTERED GRID

SHOW ADDITIONAL VARIABLES

Enter text to search...																			
#	NHPD Property ID	Property Name	Property Address	City	State	Zip Code	Total Units	Property Status	Earliest Start Date	Latest End Date	Earliest Construction Date	REAC Score 1	Target Tenant Type	Owner Type	Owner Name	Census Tract	Latitude	Longitude	
Clear	<input type="text"/>	<input type="text"/>	<input type="text"/>	<input type="text"/>	<input type="text" value="CT"/>	<input type="text"/>	<input type="text"/>	<input type="text"/>	<input type="text"/>	<input type="text" value="4/"/>	<input type="text"/>	<input type="text"/>	<input type="text"/>	<input type="text"/>	<input type="text"/>	<input type="text"/>	<input type="text"/>	<input type="text"/>	<input type="text"/>
+	1000121	SAINT MARTIN TOWNHOUSES	200 Goffe St	New Haven	CT	06511-3362	63	Active	10/01/2018	08/31/2019	01/01/1969	87a*	Family	Profit Motivated	ST MARTINS PRESERVATION LP	09009141600	41.316290	-72.935640	Details
+	1000123	ANTILLEAN MANOR COOPERATIVE	206 Day St	New Haven	CT	06511-4518	31	Active	06/01/2018	05/31/2019	01/01/1982	62c*	Family	Non-Profit	ANTILLEAN MANOR COOPERATIVE INC	09009140700	41.310700	-72.939080	Details
+	1000129	FAIRFIELD COMMONS I	20 Fairfield Ave	Stamford	CT	06902-4919	6	Active	09/01/2018	08/31/2019			Disabled	Non-Profit	MHA FAIRFIELD COMMONS I INC	09001021500	41.051245	-73.550977	Details
+	1000131	LIBERTY HOUSING	40 Liberty St	Stamford	CT	06902-4731	12	Active	10/01/2017	09/30/2021	01/01/1978	82a	Family	Profit Motivated	LIBERTY HOUSING CO	09001021400	41.049240	-73.554350	Details
+	1002060	SAINT MARY'S ELDERLY APARTMENTS	1451 Main St	East Hartford	CT	06108-1683	56	Active	01/01/1981	09/30/2020	01/01/1980	85b	Elderly	Profit Motivated	ST MARY'S HOUSING PARTNERSHIP	09003510100	41.778310	-72.637950	Details
+	1013468	CASTLE APARTMENTS	100 Norton Park Rd	Plainville	CT	06062-2628	46	Active	06/01/2014	05/31/2019	01/01/1972	95b	Family	Multiple	CASTLE APTS INC	09003420500	41.661940	-72.877626	Details
+	1013510	GODFREY THE	317 Main St	Danbury	CT	06810-5854	9	Active	07/22/1986	05/31/2019	01/01/1908	82c	Family	Multiple	THE GODFREY	09001210100	41.397000	-73.454880	Details
+	1013612	HEVRIN TERRACE	71 Keating St	Willimantic	CT	06226-1211	90	Active	07/01/1954	06/30/2021	01/01/1954	69c*	Family	Multiple	THE HOUSING AUTHORITY OF THE CITY OF WILLIMANTIC	09015800300	41.721570	-72.233100	Details

Showing Additional Variables

Using the NHPD | Database

Subsidy Filters

Subsidy Status:

Program:

APPLY FILTERS

Active and Inconclus

DOWNLOAD COMPLETE DATABASE

Xlsx

EXPORT FILTERED GRID

SHOW ADDITIONAL VARIABLES

Enter text to search...																			
#	NHPD Property ID	Property Name	Property Address	City	State	Zip Code	Total Units	Property Status	Earliest Start Date	Latest End Date	Earliest Construction Date	REAC Score 1	Target Tenant Type	Owner Type	Owner Name	Census Tract	Latitude	Longitude	
Clear					CT					4/									
+	1000121	SAINT MARTIN TOWNHOUSES	200 Goffe St	New Haven	CT	06511-3362	63	Active	10/01/2018	08/31/2019	01/01/1969	87a*	Family	Profit Motivated	ST MARTINS PRESERVATION LP	09009141600	41.316290	-72.935640	Details
+	1000123	ANTILLEAN MANOR COOPERATIVE	206 Day St	New Haven	CT	06511-4518	31	Active	06/01/2018	05/31/2019	01/01/1982	62c*	Family	Non-Profit	ANTILLEAN MANOR COOPERATIVE INC	09009140700	41.310700	-72.939080	Details
+	1000129	FAIRFIELD COMMONS I	20 Fairfield Ave	Stamford	CT	06902-4919	6	Active	09/01/2018	08/31/2019			Disabled	Non-Profit	MHA FAIRFIELD COMMONS I INC	09001021500	41.051245	-73.550977	Details
+	1000131	LIBERTY HOUSING	40 Liberty St	Stamford	CT	06902-4731	12	Active	10/01/2017	09/30/2021	01/01/1978	82a	Family	Profit Motivated	LIBERTY HOUSING CO	09001021400	41.049240	-73.554350	Details
+	1002060	SAINT MARY'S ELDERLY APARTMENTS	1451 Main St	East Hartford	CT	06108-1683	56	Active	01/01/1981	09/30/2020	01/01/1980	85b	Elderly	Profit Motivated	ST MARY'S HOUSING PARTNERSHIP	09003510100	41.778310	-72.637950	Details
+	1013468	CASTLE APARTMENTS	100 Norton Park Rd	Plainville	CT	06062-2628	46	Active	06/01/2014	05/31/2019	01/01/1972	95b	Family	Multiple	CASTLE APTS INC	09003420500	41.661940	-72.877626	Details
+	1013510	GODFREY THE	317 Main St	Danbury	CT	06810-5854	9	Active	07/22/1986	05/31/2019	01/01/1908	82c	Family	Multiple	THE GODFREY	09001210100	41.397000	-73.454880	Details
+	1013612	HEVRIN TERRACE	71 Keating St	Willimantic	CT	06226-1211	90	Active	07/01/1954	06/30/2021	01/01/1954	69c*	Family	Multiple	THE HOUSING AUTHORITY OF THE CITY OF WILLIMANTIC	09015800300	41.721570	-72.233100	Details

Showing Additional Variables

Using the NHPD | Database

Subsidy Filters

Subsidy Status:

Program:

APPLY FILTERS

Active and Inconclus

DOWNLOAD COMPLETE DATABASE

Xlsx

EXPORT FILTERED GRID

SHOW ADDITIONAL VARIABLES

Enter text to search...																			
#	NHPD Property ID	Property Name	Property Address	City	State	Zip Code	Total Units	Property Status	Earliest Start Date	Latest End Date	Earliest Construction Date	REAC Score 1	Target Tenant Type	Owner Type	Owner Name	Census Tract	Latitude	Longitude	
Clear					CT					4/									
+	1000121	SAINT MARTIN TOWNHOUSES	200 Goffe St	New Haven	CT	06511-3362	63	Active	10/01/2018	08/31/2019	01/01/1969	87a*	Family	Profit Motivated	ST MARTINS PRESERVATION LP	09009141600	41.316290	-72.935640	Details
+	1000123	ANTILLEAN MANOR COOPERATIVE	206 Day St	New Haven	CT	06511-4518	31	Active	06/01/2018	05/31/2019	01/01/1982	62c*	Family	Non-Profit	ANTILLEAN MANOR COOPERATIVE INC	09009140700	41.310700	-72.939080	Details
+	1000129	FAIRFIELD COMMONS I	20 Fairfield Ave	Stamford	CT	06902-4919	6	Active	09/01/2018	08/31/2019			Disabled	Non-Profit	MHA FAIRFIELD COMMONS I INC	09001021500	41.051245	-73.550977	Details
+	1000131	LIBERTY HOUSING	40 Liberty St	Stamford	CT	06902-4731	12	Active	10/01/2017	09/30/2021	01/01/1978	82a	Family	Profit Motivated	LIBERTY HOUSING CO	09001021400	41.049240	-73.554350	Details
+	1002060	SAINT MARY'S ELDERLY APARTMENTS	1451 Main St	East Hartford	CT	06108-1683	56	Active	01/01/1981	09/30/2020	01/01/1980	85b	Elderly	Profit Motivated	ST MARY'S HOUSING PARTNERSHIP	09003510100	41.778310	-72.637950	Details
+	1013468	CASTLE APARTMENTS	100 Norton Park Rd	Plainville	CT	06062-2628	46	Active	06/01/2014	05/31/2019	01/01/1972	95b	Family	Multiple	CASTLE APTS INC	09003420500	41.661940	-72.877626	Details
+	1013510	GODFREY THE	317 Main St	Danbury	CT	06810-5854	9	Active	07/22/1986	05/31/2019	01/01/1908	82c	Family	Multiple	THE GODFREY	09001210100	41.397000	-73.454880	Details
+	1013612	HEVRIN TERRACE	71 Keating St	Willimantic	CT	06226-1211	90	Active	07/01/1954	06/30/2021	01/01/1954	69c*	Family	Multiple	THE HOUSING AUTHORITY OF THE CITY OF WILLIMANTIC	09015800300	41.721570	-72.233100	Details

Displaying Subsidy Data

Using the NHPD | Database

Subsidy Filters

Subsidy Status:

Program:

APPLY FILTERS

Active and Inconclus

DOWNLOAD COMPLETE DATABASE

Xlsx

EXPORT FILTERED GRID

SHOW ADDITIONAL VARIABLES

Enter text to search...																			
#	NHPD Property ID	Property Name	Property Address	City	State	Zip Code	Total Units	Property Status	Earliest Start Date	Latest End Date	Earliest Construction Date	REAC Score 1	Target Tenant Type	Owner Type	Owner Name	Census Tract	Latitude	Longitude	
Clear	<input type="text"/>	<input type="text"/>	<input type="text"/>	<input type="text"/>	<input type="text" value="CT"/>	<input type="text"/>	<input type="text"/>	<input type="text"/>	<input type="text"/>	<input type="text" value="4/"/>	<input type="text"/>	<input type="text"/>	<input type="text"/>	<input type="text"/>	<input type="text"/>	<input type="text"/>	<input type="text"/>	<input type="text"/>	<input type="text"/>
+	1000121	SAINT MARTIN TOWNHOUSES	200 Goffe St	New Haven	CT	06511-3362	63	Active	10/01/2018	08/31/2019	01/01/1969	87a*	Family	Profit Motivated	ST MARTINS PRESERVATION LP	09009141600	41.316290	-72.935640	Details
+	1000123	ANTILLEAN MANOR COOPERATIVE	206 Day St	New Haven	CT	06511-4518	31	Active	06/01/2018	05/31/2019	01/01/1982	62c*	Family	Non-Profit	ANTILLEAN MANOR COOPERATIVE INC	09009140700	41.310700	-72.939080	Details
+	1000129	FAIRFIELD COMMONS I	20 Fairfield Ave	Stamford	CT	06902-4919	6	Active	09/01/2018	08/31/2019			Disabled	Non-Profit	MHA FAIRFIELD COMMONS I INC	09001021500	41.051245	-73.550977	Details
+	1000131	LIBERTY HOUSING	40 Liberty St	Stamford	CT	06902-4731	12	Active	10/01/2017	09/30/2021	01/01/1978	82a	Family	Profit Motivated	LIBERTY HOUSING CO	09001021400	41.049240	-73.554350	Details
+	1002060	SAINT MARY'S ELDERLY APARTMENTS	1451 Main St	East Hartford	CT	06108-1683	56	Active	01/01/1981	09/30/2020	01/01/1980	85b	Elderly	Profit Motivated	ST MARY'S HOUSING PARTNERSHIP	09003510100	41.778310	-72.637950	Details
+	1013468	CASTLE APARTMENTS	100 Norton Park Rd	Plainville	CT	06062-2628	46	Active	06/01/2014	05/31/2019	01/01/1972	95b	Family	Multiple	CASTLE APTS INC	09003420500	41.661940	-72.877626	Details
+	1013510	GODFREY THE	317 Main St	Danbury	CT	06810-5854	9	Active	07/22/1986	05/31/2019	01/01/1908	82c	Family	Multiple	THE GODFREY	09001210100	41.397000	-73.454880	Details
+	1013612	HEVRIN TERRACE	71 Keating St	Willimantic	CT	06226-1211	90	Active	07/01/1954	06/30/2021	01/01/1954	69c*	Family	Multiple	THE HOUSING AUTHORITY OF THE CITY OF WILLIMANTIC	09015800300	41.721570	-72.233100	Details

Displaying Subsidy Data

Using the NHPD | Database

Subsidy Filters

Subsidy Status:

Program:

APPLY FILTERS

Active and Inconclus

DOWNLOAD COMPLETE DATABASE

Xlsx

EXPORT FILTERED GRID

SHOW ADDITIONAL VARIABLES

Enter text to search...

#	NHPD Property ID	Property Name	Property Address	City	State	Zip Code	Total Units	Property Status	Earliest Start Date	Latest End Date	Earliest Construction Date	REAC Score 1	Target Tenant Type	Owner Type	Owner Name	Census Tract	Latitude	Longitude
Clear					CT					4/								
①	1000121	SAINT MARTIN TOWNHOUSES	200 Goffe St	New Haven	CT	06511-3362	63	Active	10/01/2018	08/31/2019	01/01/1969	87a*	Family	Profit Motivated	ST MARTINS PRESERVATION LP	09009141600	41.316290	-72.935640
②	1000123	ANTILLEAN MANOR COOPERATIVE	206 Day St	New Haven	CT	06511-4518	31	Active	06/01/2018	05/31/2019	01/01/1982	62c*	Family	Non-Profit	ANTILLEAN MANOR COOPERATIVE INC	09009140700	41.310700	-72.939080
③	1000129	FAIRFIELD COMMONS I	20 Fairfield Ave	Stamford	CT	06902-4919	6	Active	09/01/2018	08/31/2019			Disabled	Non-Profit	MHA FAIRFIELD COMMONS I INC	09001021500	41.051245	-73.550977
④	1000131	LIBERTY HOUSING	40 Liberty St	Stamford	CT	06902-4731	12	Active	10/01/2017	09/30/2021	01/01/1978	82a	Family	Profit Motivated	LIBERTY HOUSING CO	09001021400	41.049240	-73.554350
⑤	1002060	SAINT MARY'S ELDERLY APARTMENTS	1451 Main St	East Hartford	CT	06108-1683	56	Active	01/01/1981	09/30/2020	01/01/1980	85b	Elderly	Profit Motivated	ST MARY'S HOUSING PARTNERSHIP	09003510100	41.778310	-72.637950

[Active](#) [Inconclusive](#) [Inactive](#) [REAC](#)

HUD Property ID	HUD Subsidy ID	Subsidy Status	Subsidy Name	Subsidy Subname	Start Date	End Date	Assisted Units	Owner Name	Owner Type	Manager Name	Manager Type	Rent to FMR Ratio	Inactive Status Description	Unpaid Principal Balance
800003567	CT260024002	Active	Section 8	Sec 8 SR	10/01/2016	09/30/2020	55	ST MARY'S HOUSING PARTNERSHIP	Profit Motivated	HALLKEEN MANAGEMENT INC	Profit Motivated	91.35		
800003567	1735111	Active	HUD Insured	221(D)(4) MKT RATE MOD INC/ DISP FAMS	01/01/1981	07/01/2020	55			GREENWICH DEVELOPMENT PARTNERSHIP				250638.6

Downloading Data

Using the NHPD | Database

Subsidy Filters

Subsidy Status:

Program:

APPLY FILTERS

Active and Inconclus

DOWNLOAD COMPLETE DATABASE

Xlsx

EXPORT FILTERED GRID

SHOW ADDITIONAL VARIABLES

Enter text to search...

#	NHPD Property ID	Property Name	Property Address	City	State	Zip Code	Total Units	Property Status	Earliest Start Date	Latest End Date	Earliest Construction Date	REAC Score 1	Target Tenant Type	Owner Type	Owner Name	Census Tract	Latitude	Longitude
Clear					CT					4/								
①	1000121	SAINT MARTIN TOWNHOUSES	200 Goffe St	New Haven	CT	06511-3362	63	Active	10/01/2018	08/31/2019	01/01/1969	87a*	Family	Profit Motivated	ST MARTINS PRESERVATION LP	09009141600	41.316290	-72.935640
②	1000123	ANTILLEAN MANOR COOPERATIVE	206 Day St	New Haven	CT	06511-4518	31	Active	06/01/2018	05/31/2019	01/01/1982	62c*	Family	Non-Profit	ANTILLEAN MANOR COOPERATIVE INC	09009140700	41.310700	-72.939080
③	1000129	FAIRFIELD COMMONS I	20 Fairfield Ave	Stamford	CT	06902-4919	6	Active	09/01/2018	08/31/2019			Disabled	Non-Profit	MHA FAIRFIELD COMMONS I INC	09001021500	41.051245	-73.550977
④	1000131	LIBERTY HOUSING	40 Liberty St	Stamford	CT	06902-4731	12	Active	10/01/2017	09/30/2021	01/01/1978	82a	Family	Profit Motivated	LIBERTY HOUSING CO	09001021400	41.049240	-73.554350
⑤	1002060	SAINT MARY'S ELDERLY APARTMENTS	1451 Main St	East Hartford	CT	06108-1683	56	Active	01/01/1981	09/30/2020	01/01/1980	85b	Elderly	Profit Motivated	ST MARY'S HOUSING PARTNERSHIP	09003510100	41.778310	-72.637950

Active Inconclusive Inactive REAC

HUD Property ID	HUD Subsidy ID	Subsidy Status	Subsidy Name	Subsidy Subname	Start Date	End Date	Assisted Units	Owner Name	Owner Type	Manager Name	Manager Type	Rent to FMR Ratio	Inactive Status Description	Unpaid Principal Balance
800003567	CT260024002	Active	Section 8	Sec 8 SR	10/01/2016	09/30/2020	55	ST MARY'S HOUSING PARTNERSHIP	Profit Motivated	HALLKEEN MANAGEMENT INC	Profit Motivated	91.35		
800003567	1735111	Active	HUD Insured	221(D)(4) MKT RATE MOD INC/ DISP FAMS	01/01/1981	07/01/2020	55			GREENWICH DEVELOPMENT PARTNERSHIP				250638.6

Downloading Data

Using the NHPD | Database

Subsidy Filters

Subsidy Status:

Program:

APPLY FILTERS

Active and Inconclus

DOWNLOAD COMPLETE DATABASE

Xlsx

EXPORT FILTERED GRID

SHOW ADDITIONAL VARIABLES

Export All

Export Properties

Export Subsidies

Enter text to search...

#	NHPD Property ID	Property Name	Property Address	City	State	Zip Code	Total Units	Property Status	Earliest Start Date	Latest End Date	Target Tenant Type	Owner Type	Owner Name	Census Tract	Latitude	Longitude	
Clear					CT					4/							
+	1000121	SAINT MARTIN TOWNHOUSES	200 Goffe St	New Haven	CT	06511-3362	63	Active	10/01/2018	08/31/2019	Family	Profit Motivated	ST MARTINS PRESERVATION LP	09009141600	41.316290	-72.935640	Details
+	1000123	ANTILLEAN MANOR COOPERATIVE	206 Day St	New Haven	CT	06511-4518	31	Active	06/01/2018	05/31/2019	Family	Non-Profit	ANTILLEAN MANOR COOPERATIVE INC	09009140700	41.310700	-72.939080	Details
+	1000129	FAIRFIELD COMMONS I	20 Fairfield Ave	Stamford	CT	06902-4919	6	Active	09/01/2018	08/31/2019	Disabled	Non-Profit	MHA FAIRFIELD COMMONS I INC	09001021500	41.051245	-73.550977	Details
+	1000131	LIBERTY HOUSING	40 Liberty St	Stamford	CT	06902-4731	12	Active	10/01/2017	09/30/2021	Family	Profit Motivated	LIBERTY HOUSING CO	09001021400	41.049240	-73.554350	Details
+	1002060	SAINT MARY'S ELDERLY APARTMENTS	1451 Main St	East Hartford	CT	06108-1683	56	Active	01/01/1981	09/30/2020	Elderly	Profit Motivated	ST MARY'S HOUSING PARTNERSHIP	09003510100	41.778310	-72.637950	Details

Active Inconclusive Inactive REAC

HUD Property ID	HUD Subsidy ID	Subsidy Status	Subsidy Name	Subsidy Subname	Start Date	End Date	Assisted Units	Owner Name	Owner Type	Manager Name	Manager Type	Rent to FMR Ratio	Inactive Status Description	Unpaid Principal Balance
800003567	CT260024002	Active	Section 8	Sec 8 SR	10/01/2016	09/30/2020	55	ST MARY'S HOUSING PARTNERSHIP	Profit Motivated	HALLKEEN MANAGEMENT INC	Profit Motivated	91.35		
800003567	1735111	Active	HUD Insured	221(D)(4) MKT RATE MOD INC/ DISP FAMS	01/01/1981	07/01/2020	55			GREENWICH DEVELOPMENT PARTNERSHIP				250638.60

Downloading Data

Using the NHPD | Database

Subsidy Filters

Subsidy Status:

Program:

APPLY FILTERS

Active and Inconclus

DOWNLOAD COMPLETE DATABASE

Xlsx

EXPORT FILTERED GRID

SHOW ADDITIONAL VARIABLES

Export All

Export Properties

Export Subsidies

Enter text to search...

#	NHPD Property ID	Property Name	Property Address	City	State	Zip Code	Total Units	Property Status	Earliest Start Date	Lates End Date	Export Properties	Target Tenant Type	Owner Type	Owner Name	Census Tract	Latitude	Longitude		
Clear					CT					4/	Export Subsidies								
③	1000121	SAINT MARTIN TOWNHOUSES	200 Goffe St	New Haven	CT	06511-3362	63	Active	10/01/2018	08/31/2019	01/01/1982	62c*	Family	Profit Motivated	ST MARTINS PRESERVATION LP	09009141600	41.316290	-72.935640	Details
③	1000123	ANTILLEAN MANOR COOPERATIVE	206 Day St	New Haven	CT	06511-4518	31	Active	06/01/2018	05/31/2019	01/01/1982	62c*	Family	Non-Profit	ANTILLEAN MANOR COOPERATIVE INC	09009140700	41.310700	-72.939080	Details
③	1000129	FAIRFIELD COMMONS I	20 Fairfield Ave	Stamford	CT	06902-4919	6	Active	09/01/2018	08/31/2019			Disabled	Non-Profit	MHA FAIRFIELD COMMONS I INC	09001021500	41.051245	-73.550977	Details
③	1000131	LIBERTY HOUSING	40 Liberty St	Stamford	CT	06902-4731	12	Active	10/01/2017	09/30/2021	01/01/1978	82a	Family	Profit Motivated	LIBERTY HOUSING CO	09001021400	41.049240	-73.554350	Details
③	1002060	SAINT MARY'S ELDERLY APARTMENTS	1451 Main St	East Hartford	CT	06108-1683	56	Active	01/01/1981	09/30/2020	01/01/1980	85b	Elderly	Profit Motivated	ST MARY'S HOUSING PARTNERSHIP	09003510100	41.778310	-72.637950	Details

Active Inconclusive Inactive REAC

HUD Property ID	HUD Subsidy ID	Subsidy Status	Subsidy Name	Subsidy Subname	Start Date	End Date	Assisted Units	Owner Name	Owner Type	Manager Name	Manager Type	Rent to FMR Ratio	Inactive Status Description	Unpaid Principal Balance
800003567	CT260024002	Active	Section 8	Sec 8 SR	10/01/2016	09/30/2020	55	ST MARY'S HOUSING PARTNERSHIP	Profit Motivated	HALLKEEN MANAGEMENT INC	Profit Motivated	91.35		
800003567	1735111	Active	HUD Insured	221(D)(4) MKT RATE MOD INC/ DISP FAMS	01/01/1981	07/01/2020	55			GREENWICH DEVELOPMENT PARTNERSHIP				250638.60

Downloading Data

Using the NHPD | Database

Subsidy Filters

Subsidy Status:

Program:

APPLY FILTERS

Active and Inconclus

DOWNLOAD COMPLETE DATABASE

Xlsx

EXPORT FILTERED GRID

SHOW ADDITIONAL VARIABLES

Export All

Export Properties

Export Subsidies

Enter text to search...

#	NHPD Property ID	Property Name	Property Address	City	State	Zip Code	Total Units	Property Status	Earliest Start Date	Latest End Date	Target Tenant Type	Owner Type	Owner Name	Census Tract	Latitude	Longitude	
Clear					CT					4/							
①	1000121	SAINT MARTIN TOWNHOUSES	200 Goffe St	New Haven	CT	06511-3362	63	Active	10/01/2018	08/31/2019	Family	Profit Motivated	ST MARTINS PRESERVATION LP	09009141600	41.316290	-72.935640	Details
②	1000123	ANTILLEAN MANOR COOPERATIVE	206 Day St	New Haven	CT	06511-4518	31	Active	06/01/2018	05/31/2019	Family	Non-Profit	ANTILLEAN MANOR COOPERATIVE INC	09009140700	41.310700	-72.939080	Details
③	1000129	FAIRFIELD COMMONS I	20 Fairfield Ave	Stamford	CT	06902-4919	6	Active	09/01/2018	08/31/2019	Disabled	Non-Profit	MHA FAIRFIELD COMMONS I INC	09001021500	41.051245	-73.550977	Details
④	1000131	LIBERTY HOUSING	40 Liberty St	Stamford	CT	06902-4731	12	Active	10/01/2017	09/30/2021	Family	Profit Motivated	LIBERTY HOUSING CO	09001021400	41.049240	-73.554350	Details
⑤	1002060	SAINT MARY'S ELDERLY APARTMENTS	1451 Main St	East Hartford	CT	06108-1683	56	Active	01/01/1981	09/30/2020	Elderly	Profit Motivated	ST MARY'S HOUSING PARTNERSHIP	09003510100	41.778310	-72.637950	Details

Active Inconclusive Inactive REAC

HUD Property ID	HUD Subsidy ID	Subsidy Status	Subsidy Name	Subsidy Subname	Start Date	End Date	Assisted Units	Owner Name	Owner Type	Manager Name	Manager Type	Rent to FMR Ratio	Inactive Status Description	Unpaid Principal Balance
800003567	CT260024002	Active	Section 8	Sec 8 SR	10/01/2016	09/30/2020	55	ST MARY'S HOUSING PARTNERSHIP	Profit Motivated	HALLKEEN MANAGEMENT INC	Profit Motivated	91.35		
800003567	1735111	Active	HUD Insured	221(D)(4) MKT RATE MOD INC/ DISP FAMS	01/01/1981	07/01/2020	55			GREENWICH DEVELOPMENT PARTNERSHIP				250638.60

Downloading Data

Using the NHPD | Database

Subsidy Filters

Subsidy Status:

Program:

APPLY FILTERS

Active and Inconclus

DOWNLOAD COMPLETE DATABASE

Xlsx

EXPORT FILTERED GRID

SHOW ADDITIONAL VARIABLES

- Active and Inconclusive Properties OK(xlsx)
- Active and Inconclusive Properties OR(xlsx)
- Active and Inconclusive Properties PA(xlsx)
- Active and Inconclusive Properties RI(xlsx)
- Active and Inconclusive Properties SC(xlsx)
- Active and Inconclusive Properties SD(xlsx)
- Active and Inconclusive Properties TN(xlsx)
- Active and Inconclusive Properties TX(xlsx)
- Active and Inconclusive Properties UT(xlsx)
- Active and Inconclusive Properties VA(xlsx)
- Active and Inconclusive Properties VT(xlsx)
- Active and Inconclusive Properties WA(xlsx)
- Active and Inconclusive Properties WI(xlsx)
- Active and Inconclusive Properties WV(xlsx)
- Active and Inconclusive Properties WY(xlsx)
- Active and Inconclusive Properties WY(xlsx)
- Active Properties(xlsx)
- All Properties(xlsx)
- All Subsidies(xlsx)
- Inactive Properties(xlsx)

Enter text to search...

#	NHPD Property ID	Property Name	Property Address	Property Status	Earliest Start Date	Latest End Date	Earliest Construction Date	REAC Score 1	Target Tenant Type	Owner Type	Owner Name	Census Tract	Latitude	Longitude	
Clear						4/									
③	1000121	SAINT MARTIN TOWNHOUSES	200 St	63 Active	10/01/2018	08/31/2019	01/01/1969	87a*	Family	Profit Motivated	ST MARTINS PRESERVATION LP	09009141600	41.316290	-72.935640	Details
③	1000123	ANTILLEAN MANOR COOPERATIVE	206 St	31 Active	06/01/2018	05/31/2019	01/01/1982	62c*	Family	Non-Profit	ANTILLEAN MANOR COOPERATIVE INC	09009140700	41.310700	-72.939080	Details
③	1000129	FAIRFIELD COMMONS I	20 Fairfield Ave	6 Active	09/01/2018	08/31/2019			Disabled	Non-Profit	MHA FAIRFIELD COMMONS I INC	09001021500	41.051245	-73.550977	Details
③	1000131	LIBERTY HOUSING	40 St	12 Active	10/01/2017	09/30/2021	01/01/1978	82a	Family	Profit Motivated	LIBERTY HOUSING CO	09001021400	41.049240	-73.554350	Details
③	1002060	SAINT MARY'S ELDERLY APARTMENTS	145 St	56 Active	01/01/1981	09/30/2020	01/01/1980	85b	Elderly	Profit Motivated	ST MARY'S HOUSING PARTNERSHIP	09003510100	41.778310	-72.637950	Details

Active Inconclusive Inactive REAC

HUD Property ID	HUD Subsidy ID	Subsidy Status	Subsidy Name	Subsidy Subname	Start Date	End Date	Assisted Units	Owner Name	Owner Type	Manager Name	Manager Type	Rent to FMR Ratio	Inactive Status Description	Unpaid Principal Balance
800003567	CT260024002	Active	Section 8	Sec 8 SR	10/01/2016	09/30/2020	55	ST MARY'S HOUSING PARTNERSHIP	Profit Motivated	HALLKEEN MANAGEMENT INC	Profit Motivated	91.35		
800003567	1735111	Active	HUD Insured	221(D)(4) MKT RATE MOD INC/ DISP FAMS	01/01/1981	07/01/2020	55			GREENWICH DEVELOPMENT PARTNERSHIP				250638.60

Downloading Data

Using the NHPD | Database

Subsidy Filters

Subsidy Status:

Program:

APPLY FILTERS

Active and Inconclus

DOWNLOAD COMPLETE DATABASE

Xlsx

EXPORT FILTERED GRID

SHOW ADDITIONAL VARIABLES

Active and Inconclusive Properties OK(xlsx)
Active and Inconclusive Properties OR(xlsx)
Active and Inconclusive Properties PA(xlsx)
Active and Inconclusive Properties RI(xlsx)
Active and Inconclusive Properties SC(xlsx)
Active and Inconclusive Properties SD(xlsx)
Active and Inconclusive Properties TN(xlsx)
Active and Inconclusive Properties TX(xlsx)
Active and Inconclusive Properties UT(xlsx)
Active and Inconclusive Properties VA(xlsx)
Active and Inconclusive Properties VT(xlsx)
Active and Inconclusive Properties WA(xlsx)
Active and Inconclusive Properties WI(xlsx)
Active and Inconclusive Properties WV(xlsx)
Active and Inconclusive Properties WY(xlsx)
Active and Inconclusive Properties(xlsx)
Active Properties(xlsx)
All Properties(xlsx)
All Subsidies(xlsx)
Inactive Properties(xlsx)

Enter text to search...

#	NHPD Property ID	Property Name	Property Address	Property Status	Earliest Start Date	Latest End Date	Earliest Construction Date	REAC Score 1	Target Tenant Type	Owner Type	Owner Name	Census Tract	Latitude	Longitude	
Clear	<input type="text"/>	<input type="text"/>	<input type="text"/>	<input type="text"/>	<input type="text"/>	<input type="text"/>	<input type="text"/>	<input type="text"/>	<input type="text"/>	<input type="text"/>	<input type="text"/>	<input type="text"/>	<input type="text"/>	<input type="text"/>	<input type="text"/>
③	1000121	SAINT MARTIN TOWNHOUSES	200 St	63 Active	10/01/2018	08/31/2019	01/01/1969	87a*	Family	Profit Motivated	ST MARTINS PRESERVATION LP	09009141600	41.316290	-72.935640	Details
③	1000123	ANTILLEAN MANOR COOPERATIVE	206 St	31 Active	06/01/2018	05/31/2019	01/01/1982	62c*	Family	Non-Profit	ANTILLEAN MANOR COOPERATIVE INC	09009140700	41.310700	-72.939080	Details
③	1000129	FAIRFIELD COMMONS I	20 Fairfield Ave	6 Active	09/01/2018	08/31/2019			Disabled	Non-Profit	MHA FAIRFIELD COMMONS I INC	09001021500	41.051245	-73.550977	Details
③	1000131	LIBERTY HOUSING	40 Liberty St	12 Active	10/01/2017	09/30/2021	01/01/1978	82a	Family	Profit Motivated	LIBERTY HOUSING CO	09001021400	41.049240	-73.554350	Details
③	1002060	SAINT MARY'S ELDERLY APARTMENTS	145 St	56 Active	01/01/1981	09/30/2020	01/01/1980	85b	Elderly	Profit Motivated	ST MARY'S HOUSING PARTNERSHIP	09003510100	41.778310	-72.637950	Details

Active Inconclusive Inactive REAC

HUD Property ID	HUD Subsidy ID	Subsidy Status	Subsidy Name	Subsidy Subname	Start Date	End Date	Assisted Units	Owner Name	Owner Type	Manager Name	Manager Type	Rent to FMR Ratio	Inactive Status Description	Unpaid Principal Balance
800003567	CT260024002	Active	Section 8	Sec 8 SR	10/01/2016	09/30/2020	55	ST MARY'S HOUSING PARTNERSHIP	Profit Motivated	HALLKEEN MANAGEMENT INC	Profit Motivated	91.35		
800003567	1735111	Active	HUD Insured	221(D)(4) MKT RATE MOD INC/ DISP FAMS	01/01/1981	07/01/2020	55			GREENWICH DEVELOPMENT PARTNERSHIP				250638.60

Examples of NHPD Used in Preservation Research

Using the NHPD | Database

- [*Aging Affordable Rental Housing in Tennessee & the Need for Preservation \(2015\)*](#)
- [*City of Richmond Affordable Housing Strategy \(2014\)*](#)
- [*Wake County Affordable Housing Plan \(2017\)*](#)
- [*NHPD in the News*](#)

Updates for 2019

Using the NHPD | Database

- Reports
 - Picture of Preservation*
 - Preservation profiles
- Data
 - Quarterly data refresh
 - Outreach for state subsidies
 - LIHTC affordability restrictions
- Webinars

**new for 2019*

Questions



NATIONAL
HOUSING LAW
PROJECT